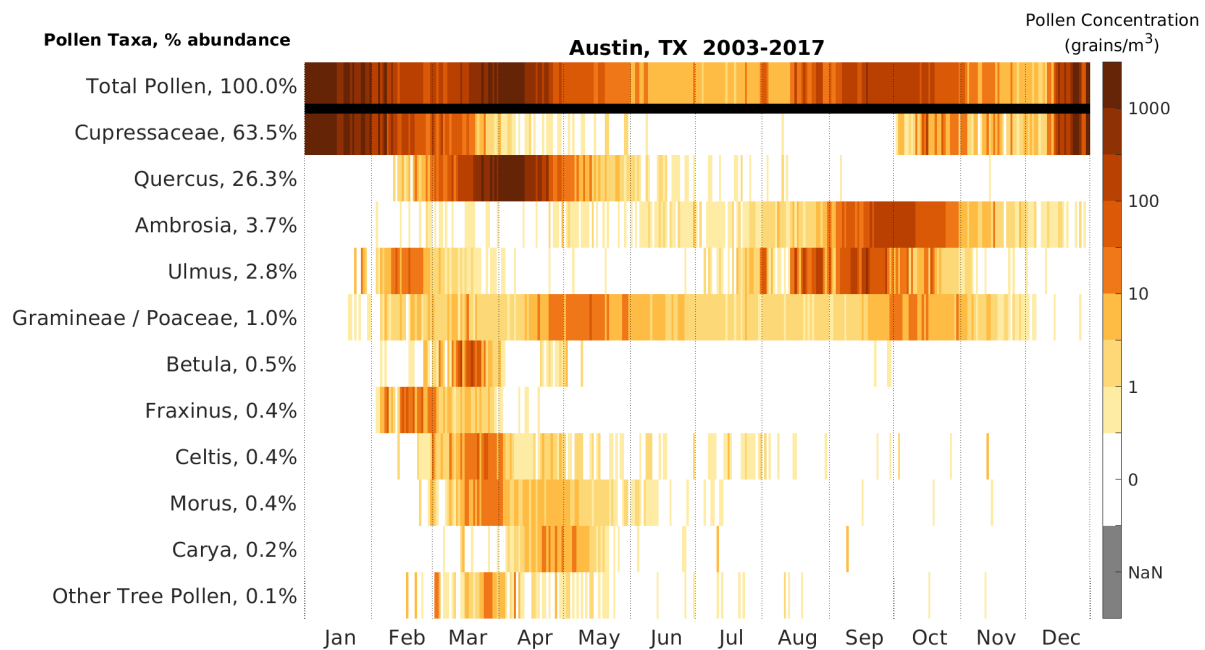
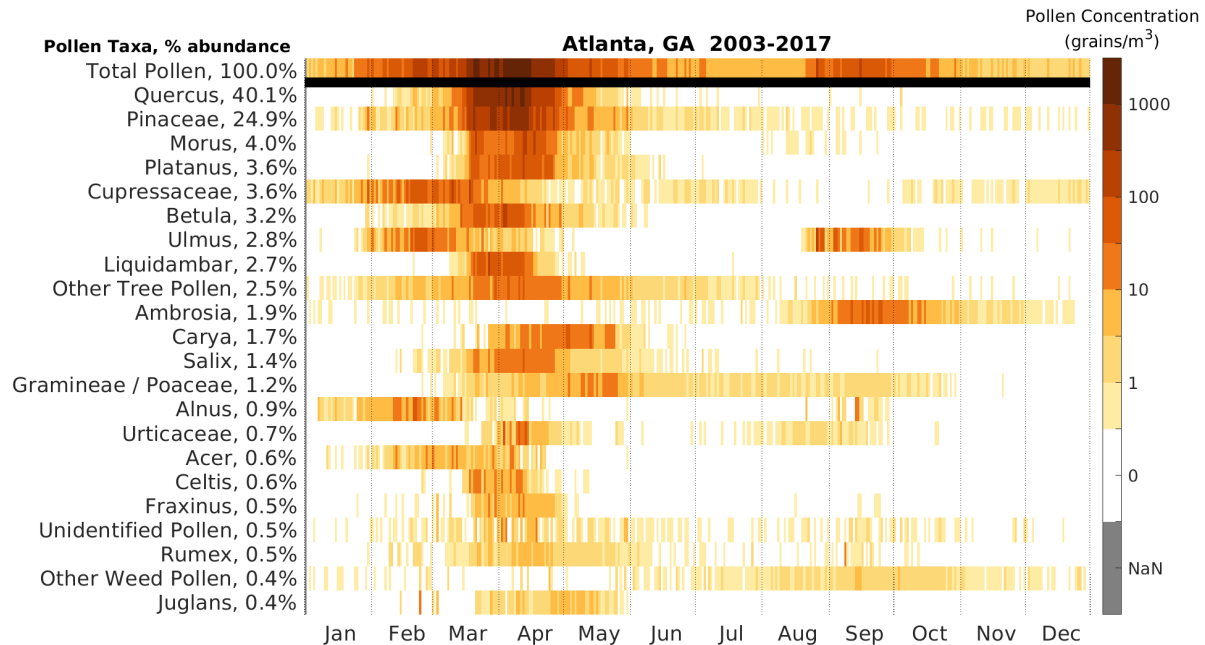
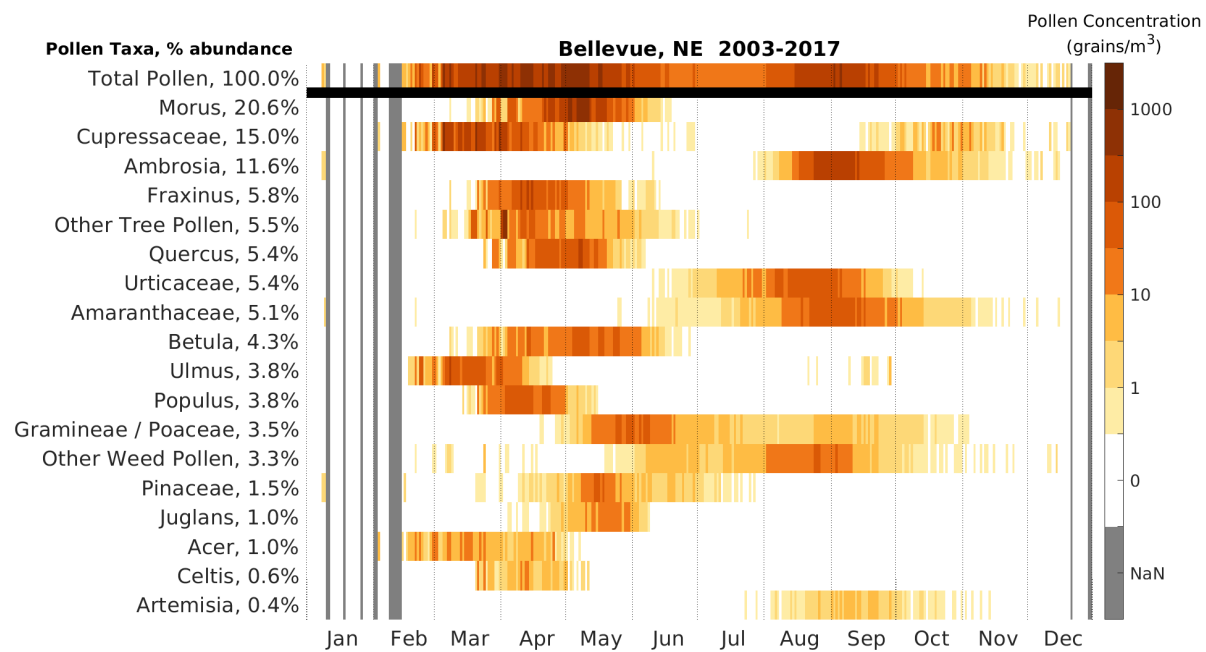
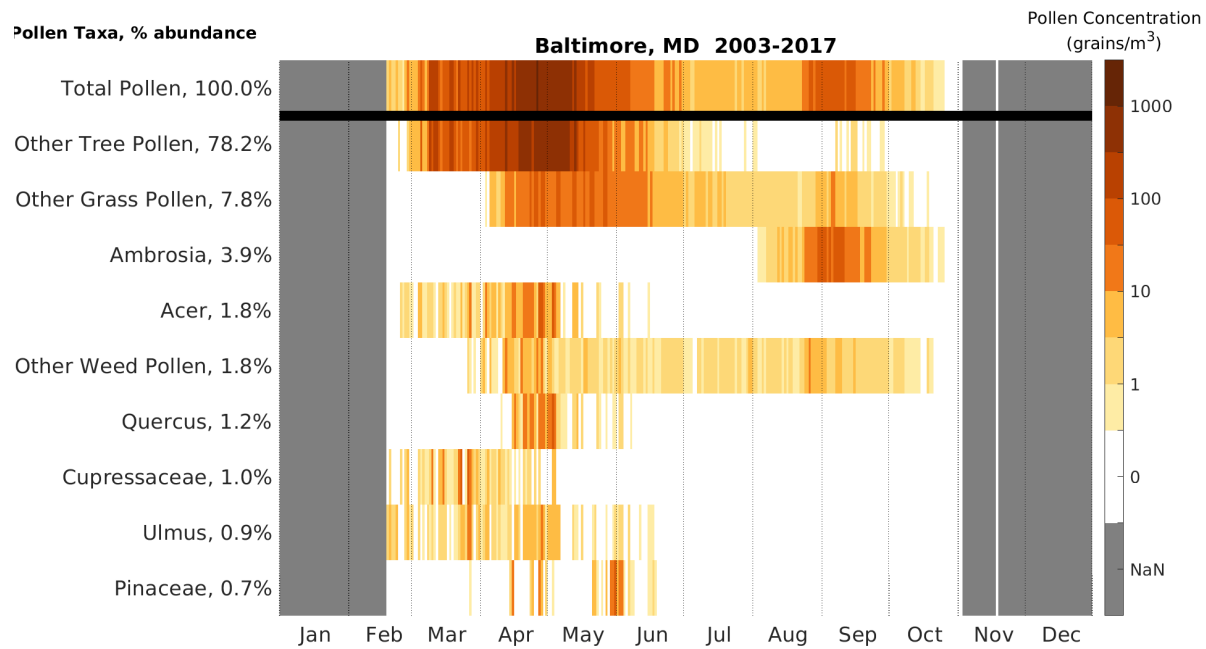
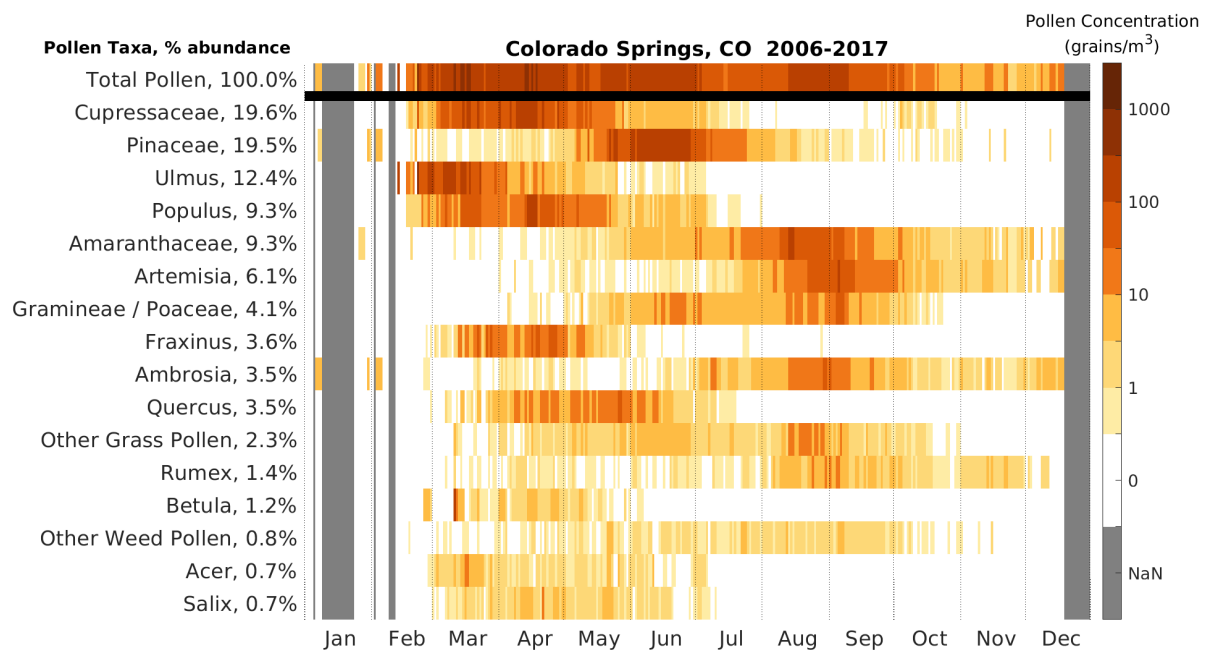
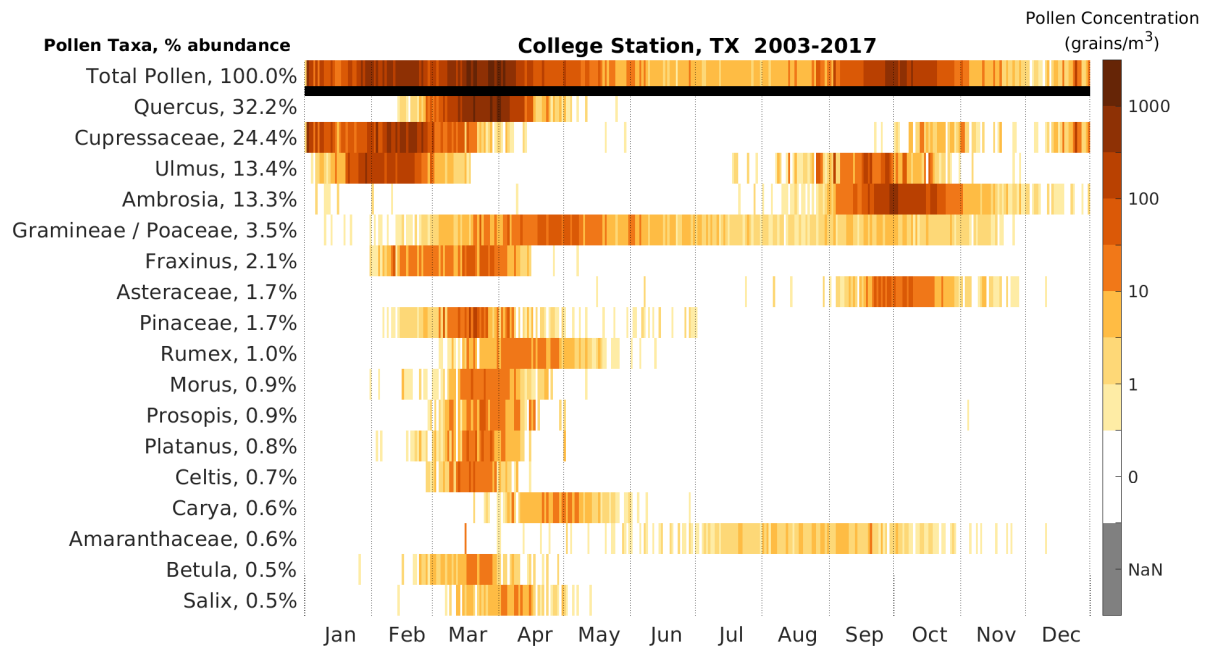


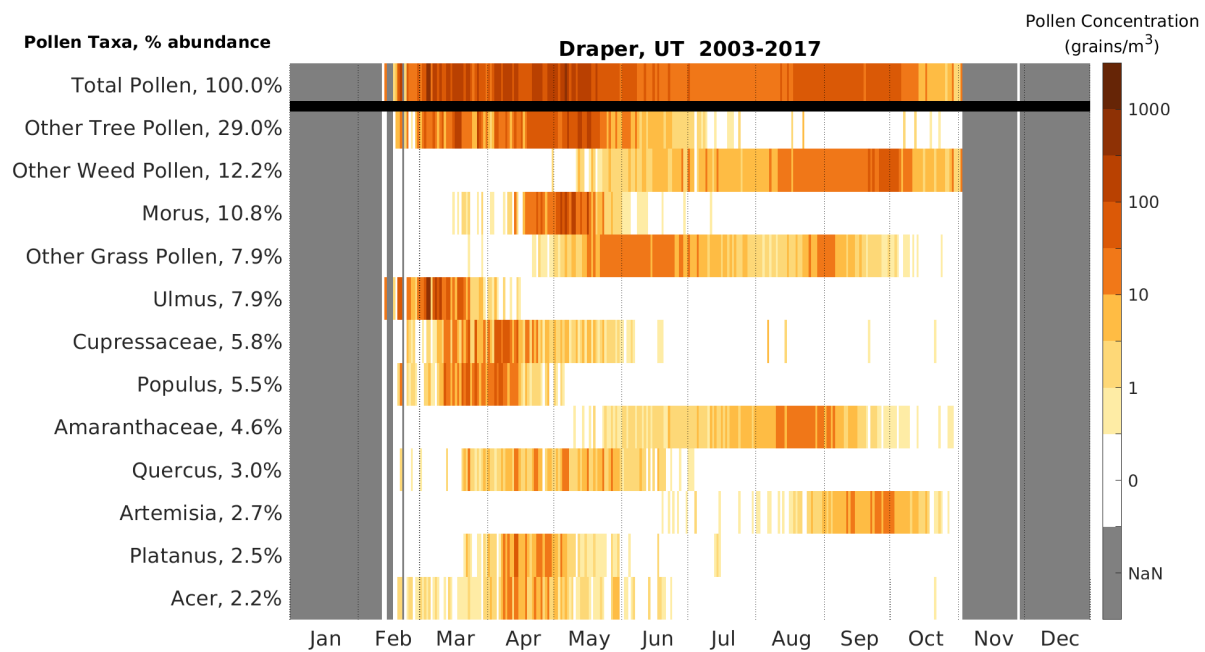
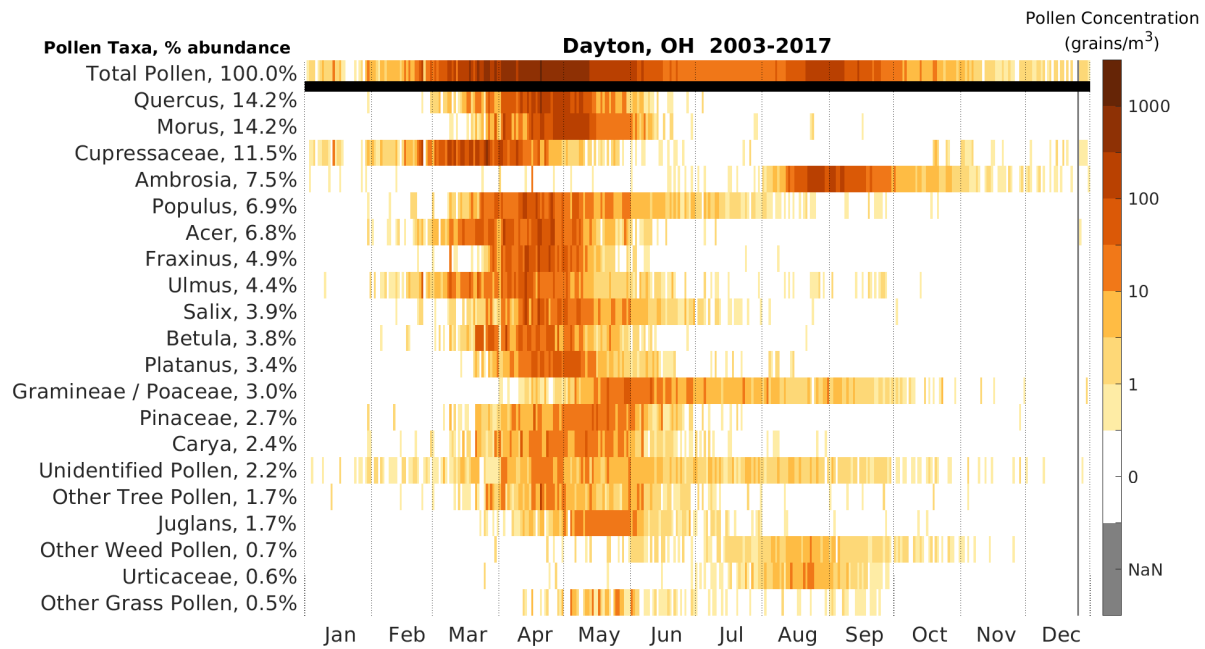
Location-specific Pollen Calendars

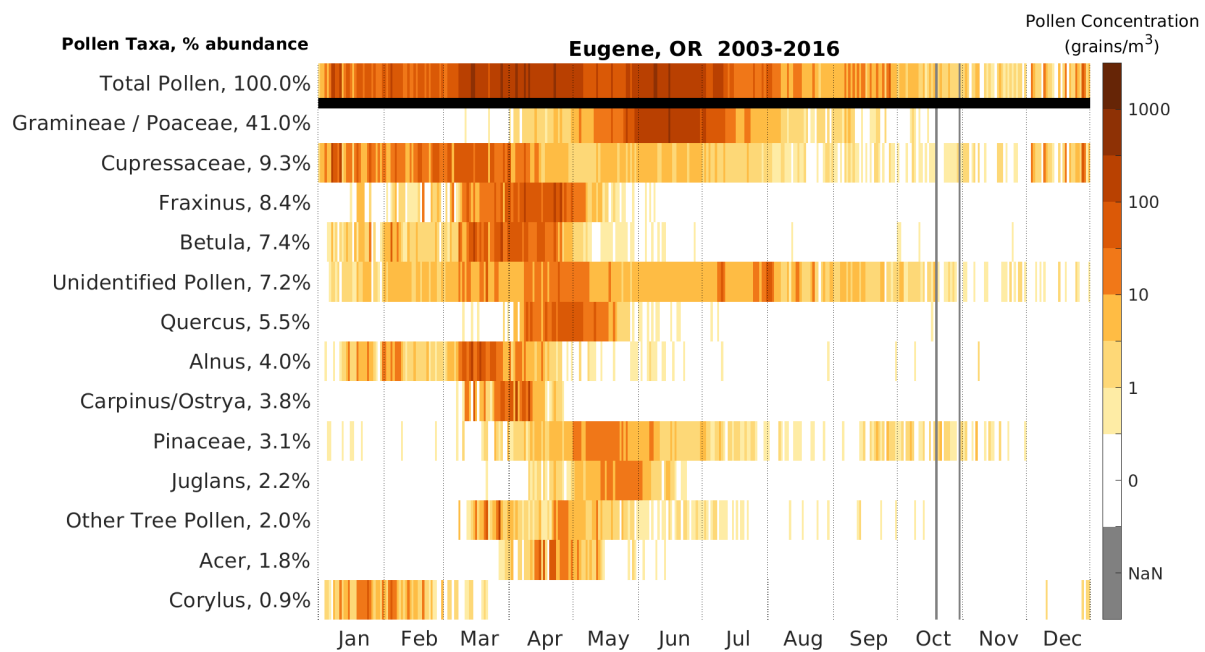
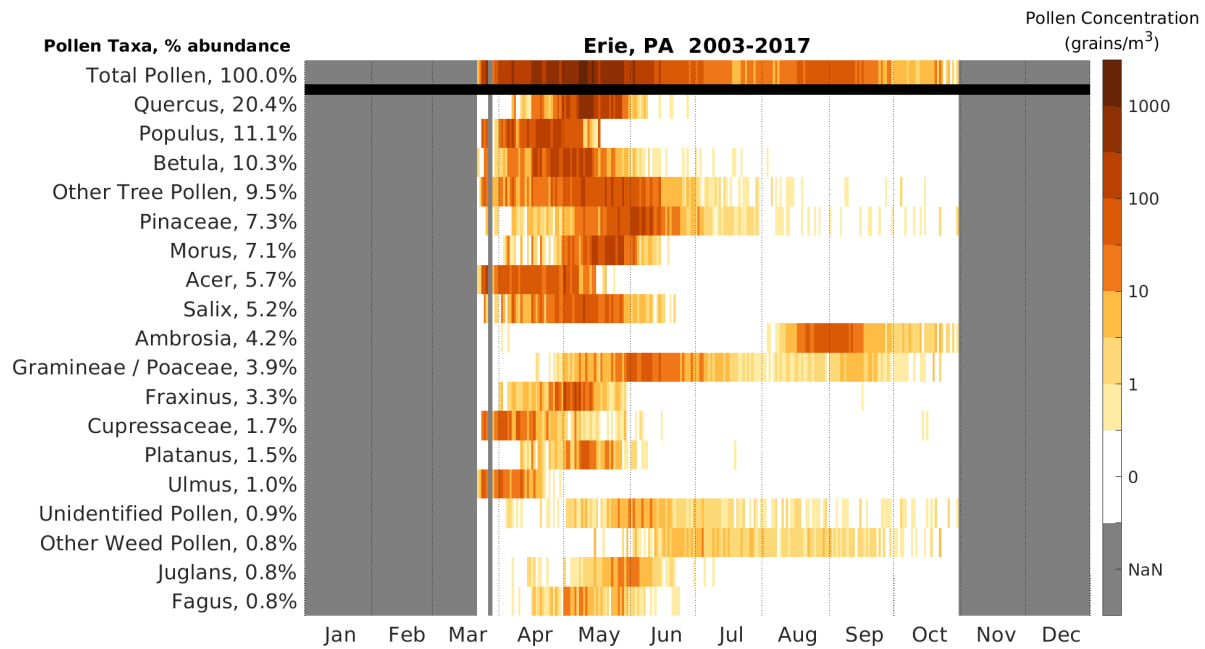
Pollen calendars for the station at the city and state or province listed in title of figure. Daily long-term mean of pollen concentration by pollen taxa, 2003-2017. Percent abundance is the ratio of that taxon's API to the sum of API over all pollen taxa. Only pollen taxa with mean API over 150 grain-day/m³ are shown. Missing data are shaded grey and denoted NaN in the colorbar.

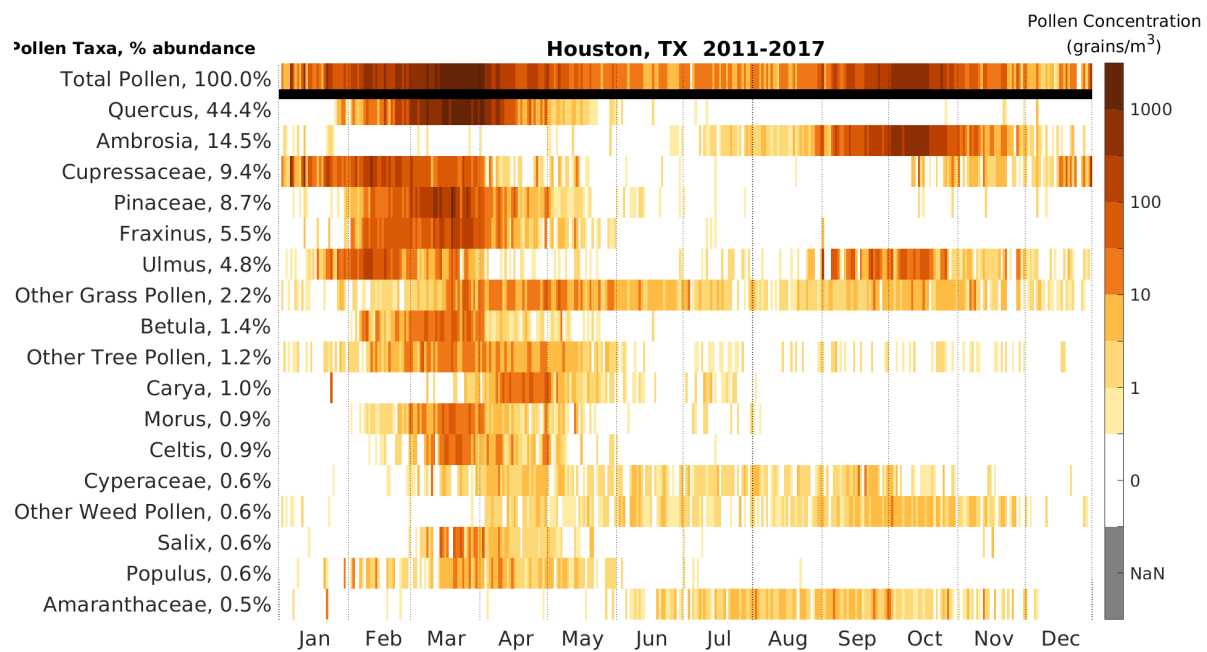
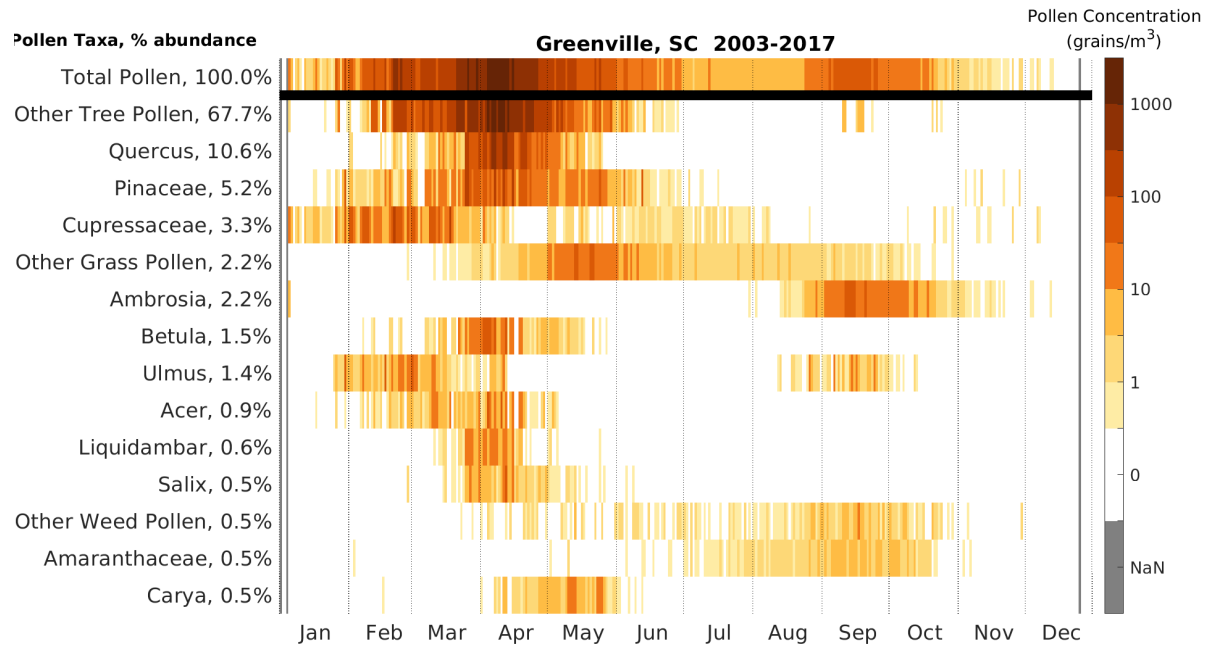


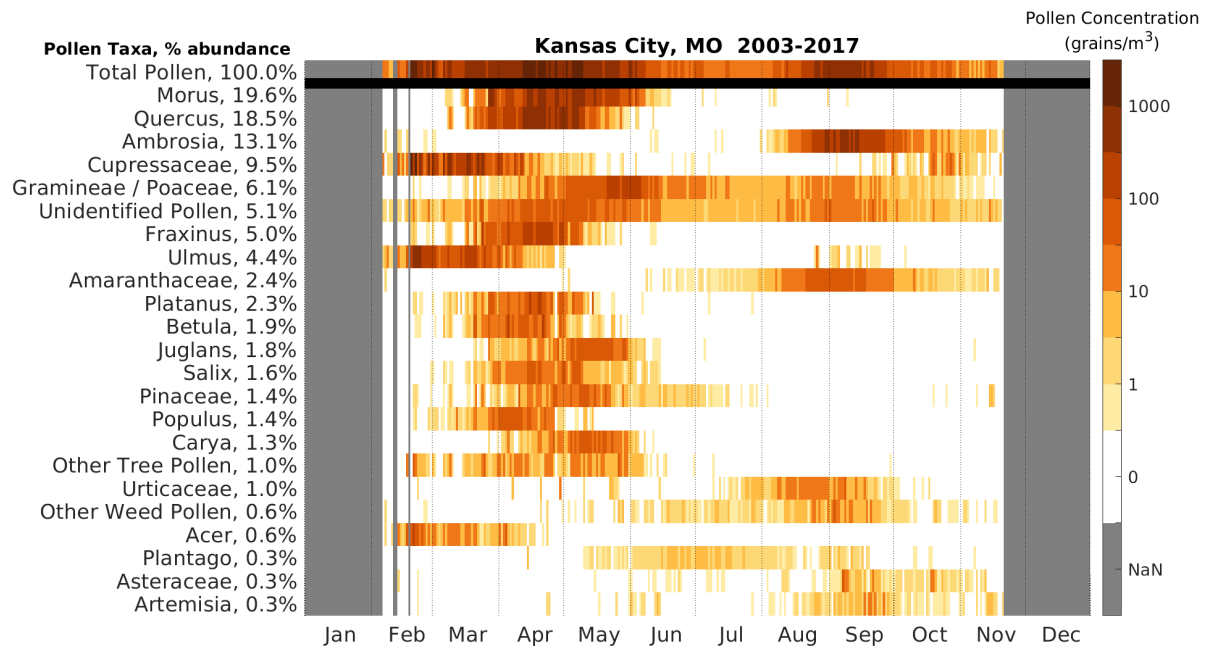


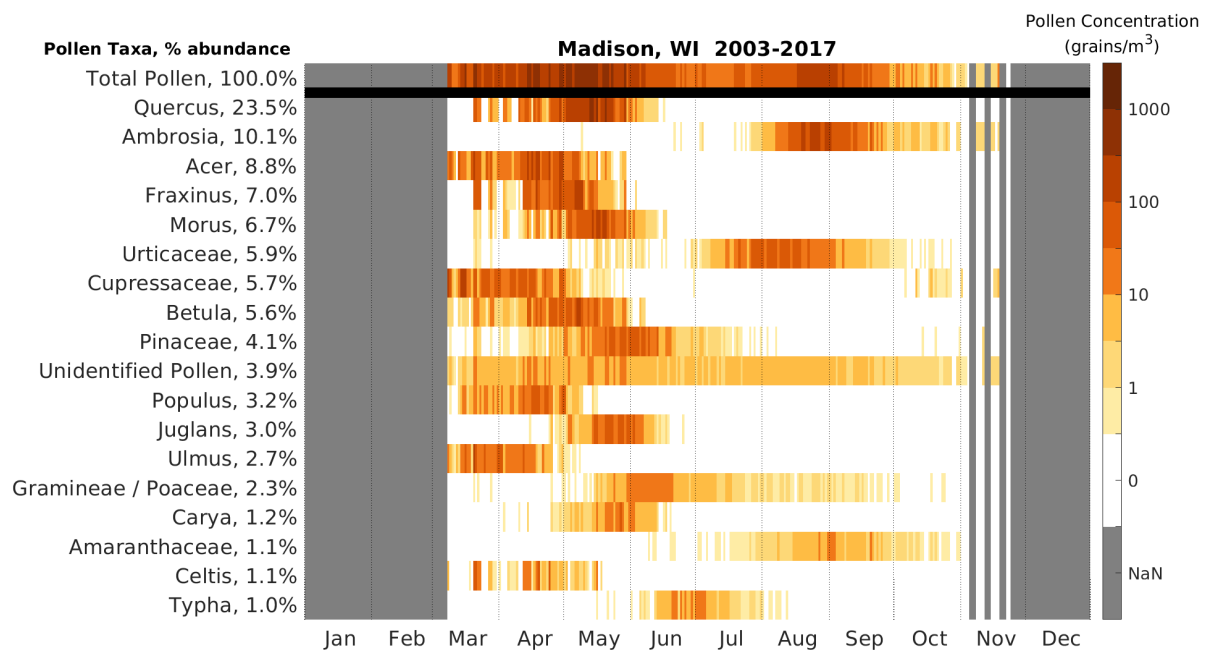
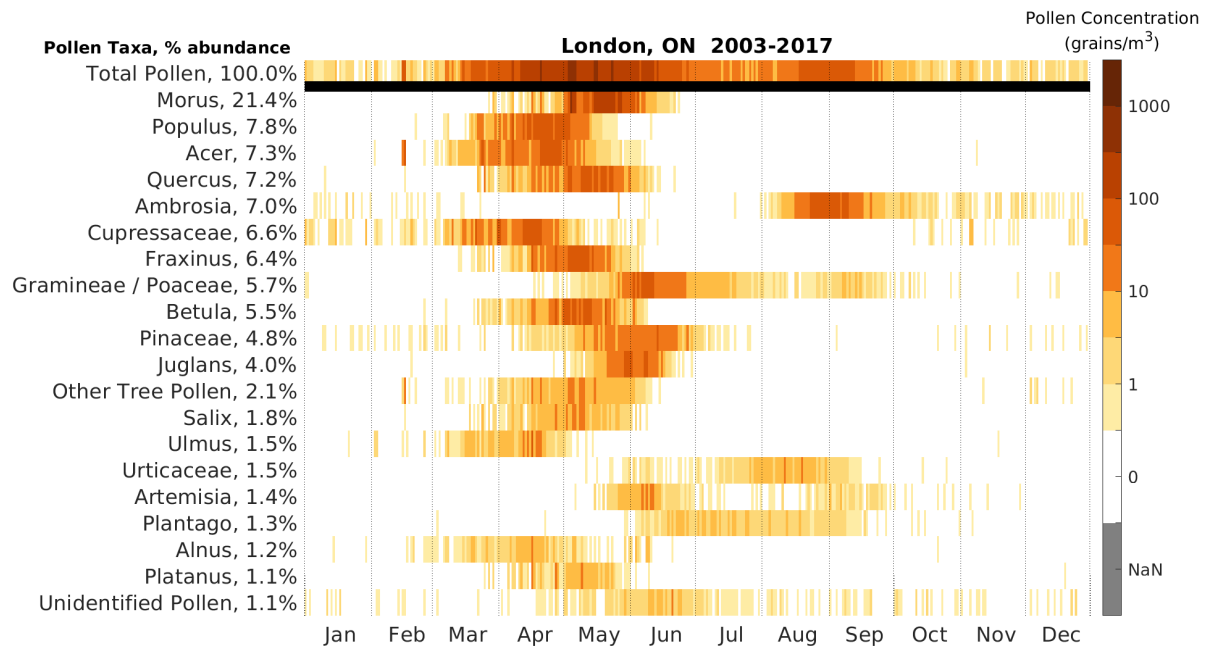


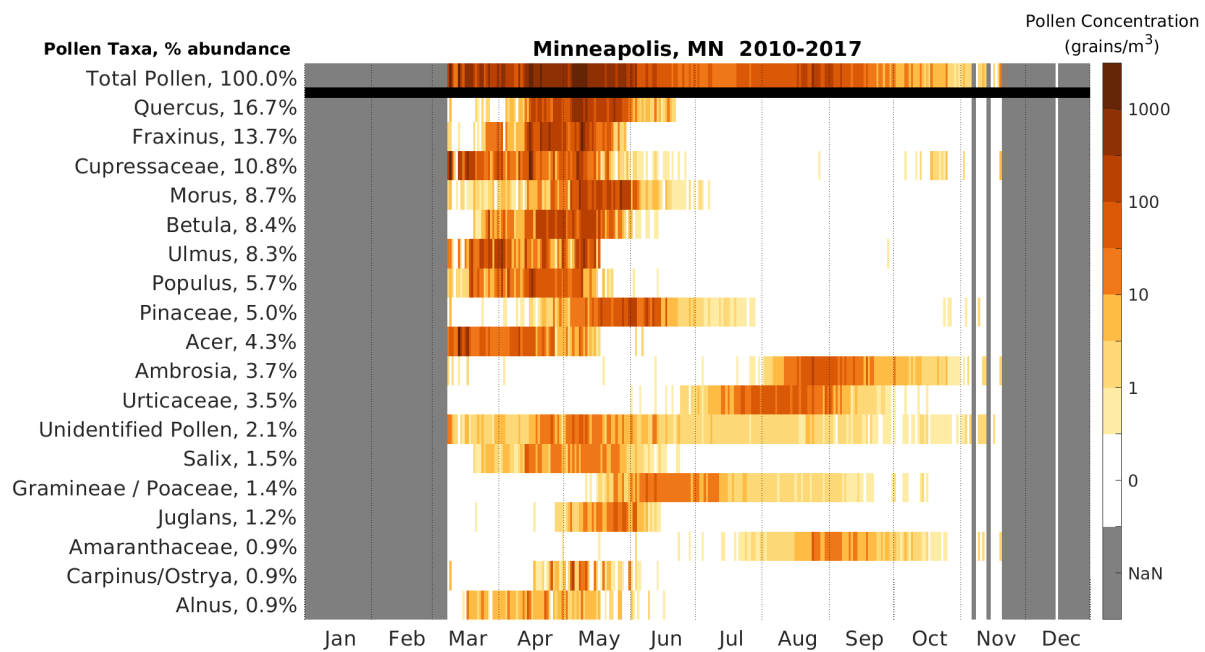
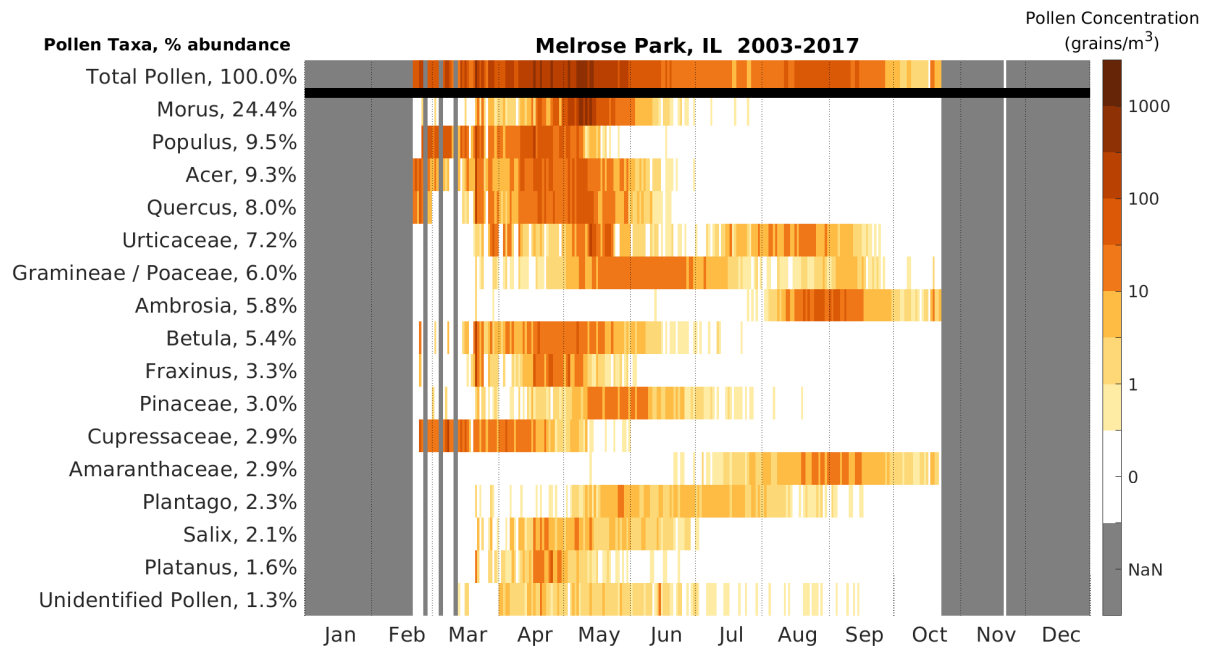


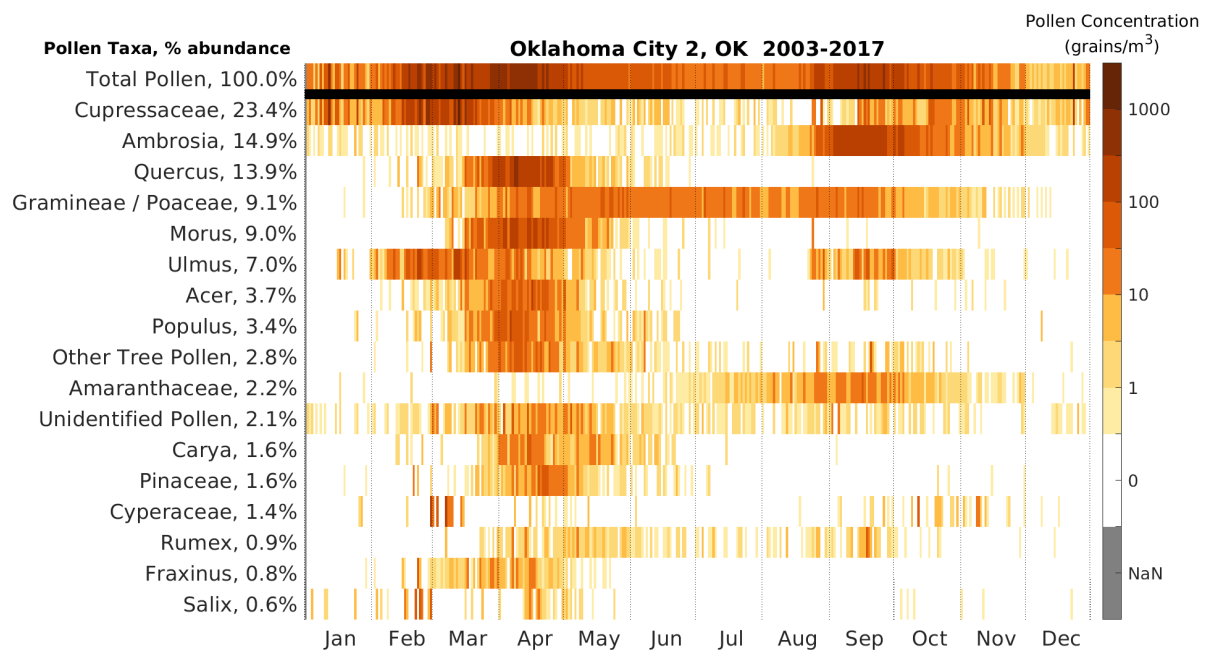
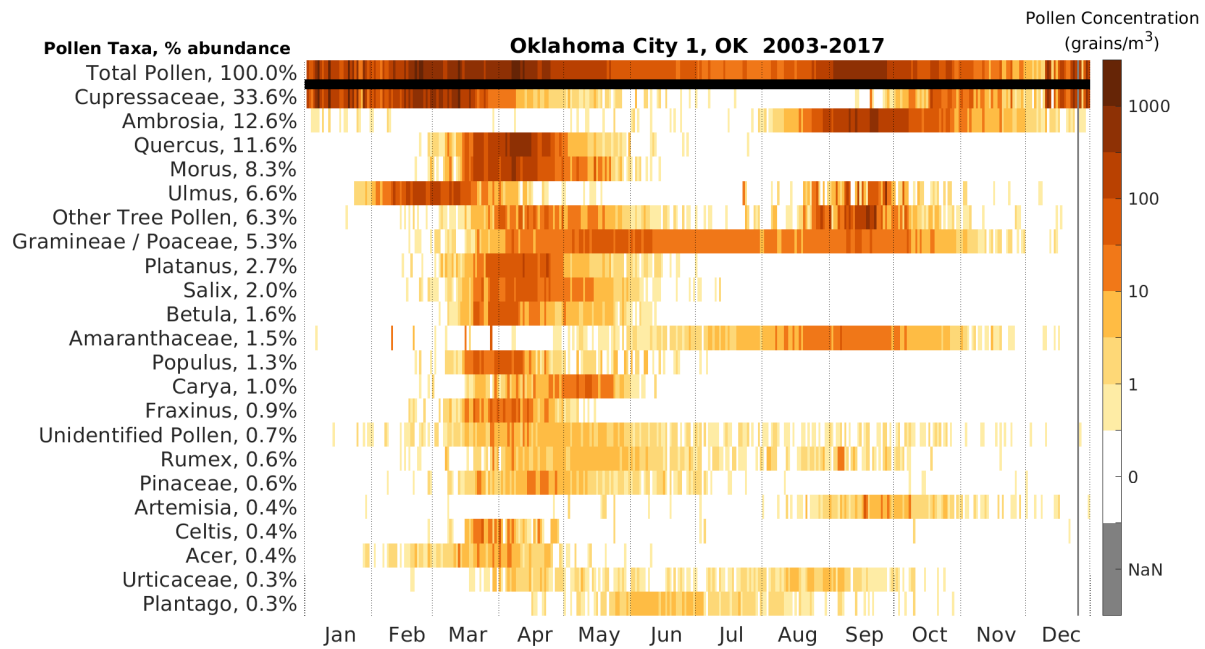


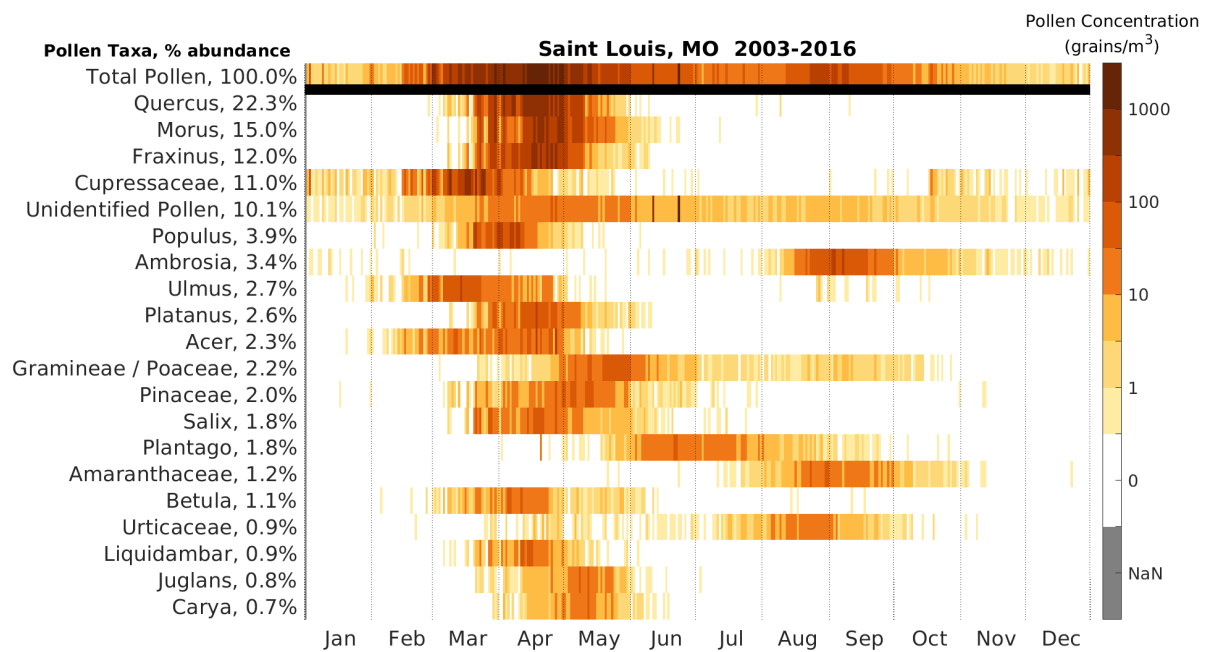
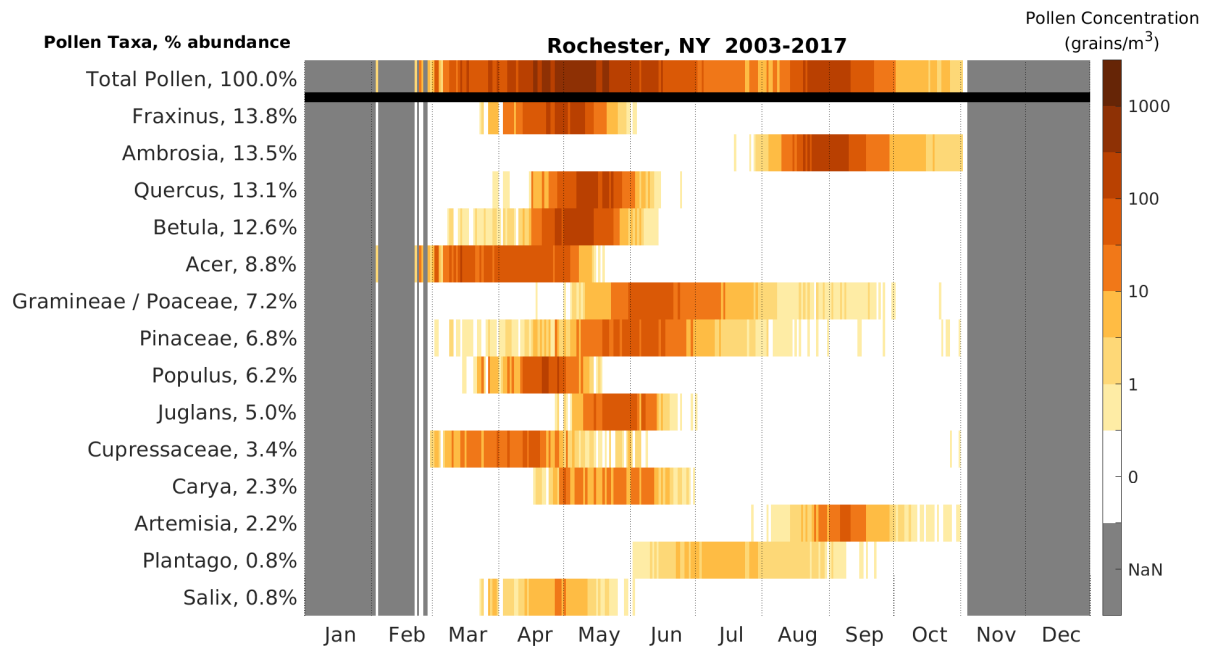


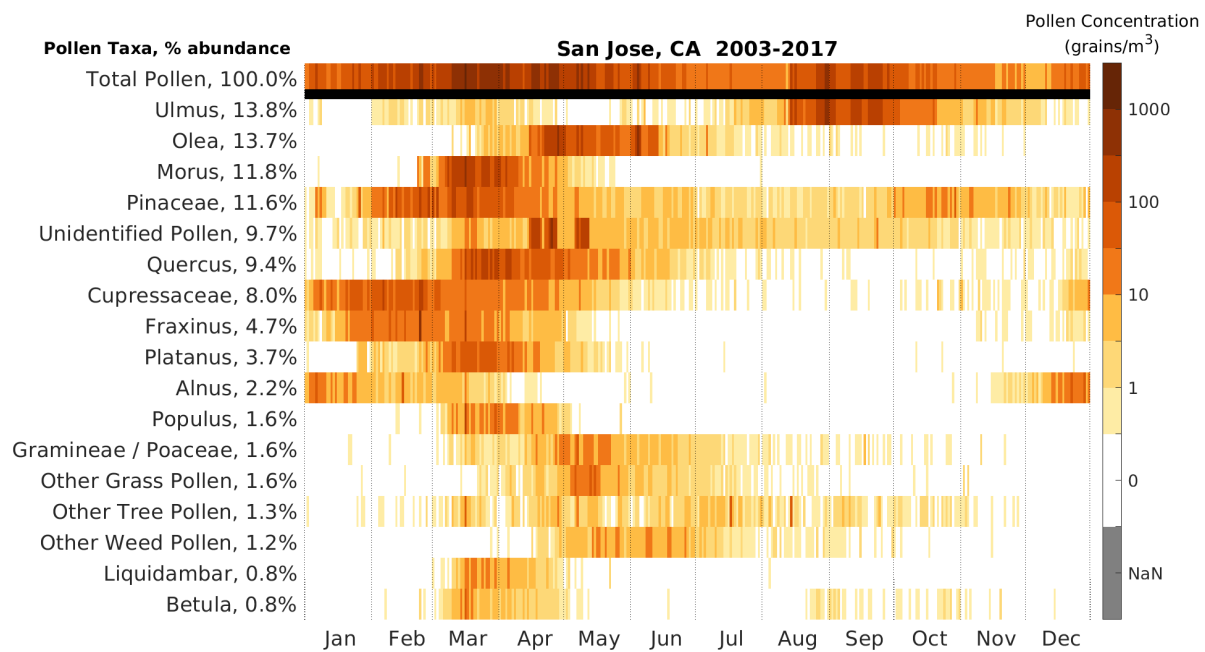
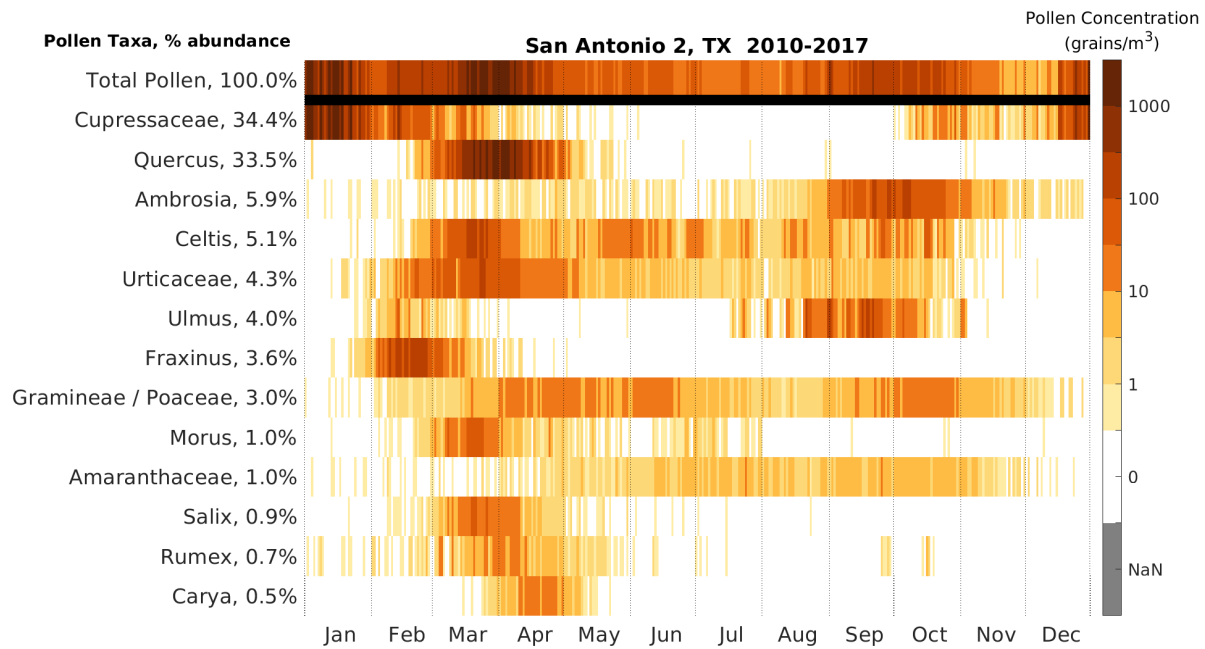


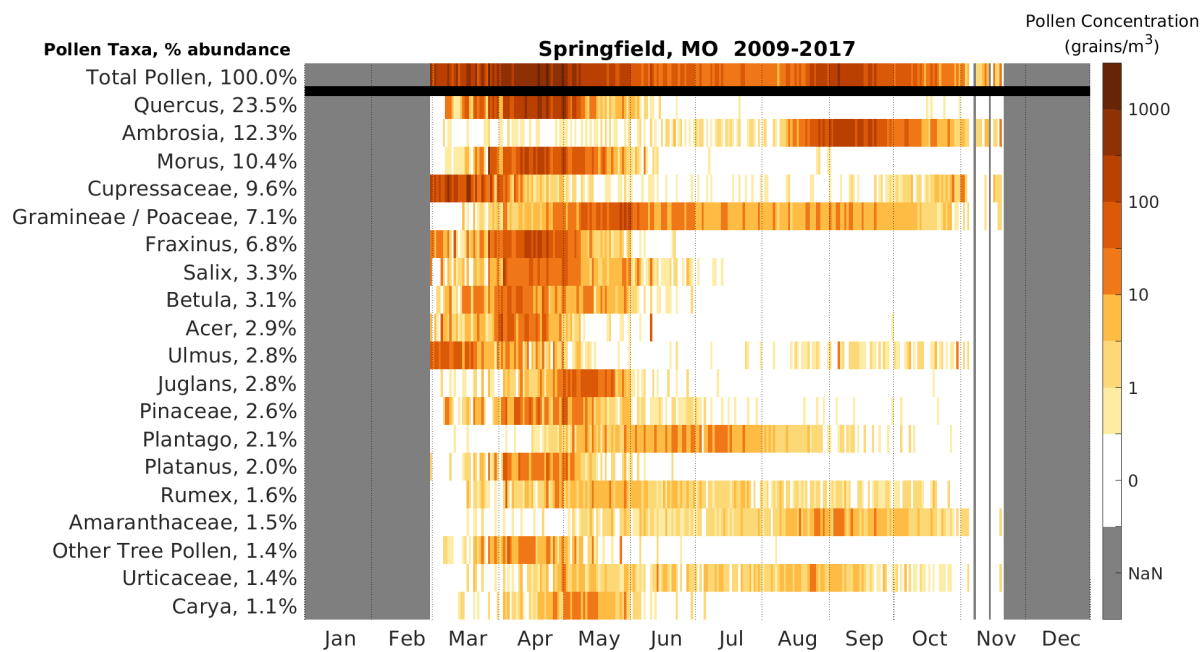
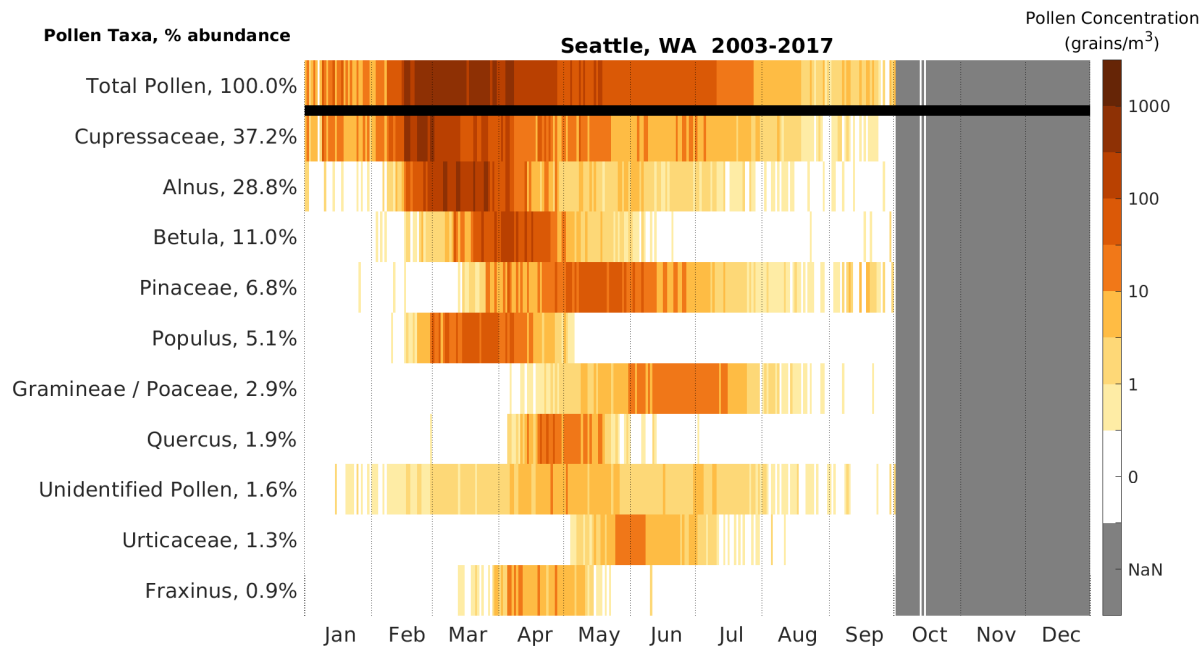


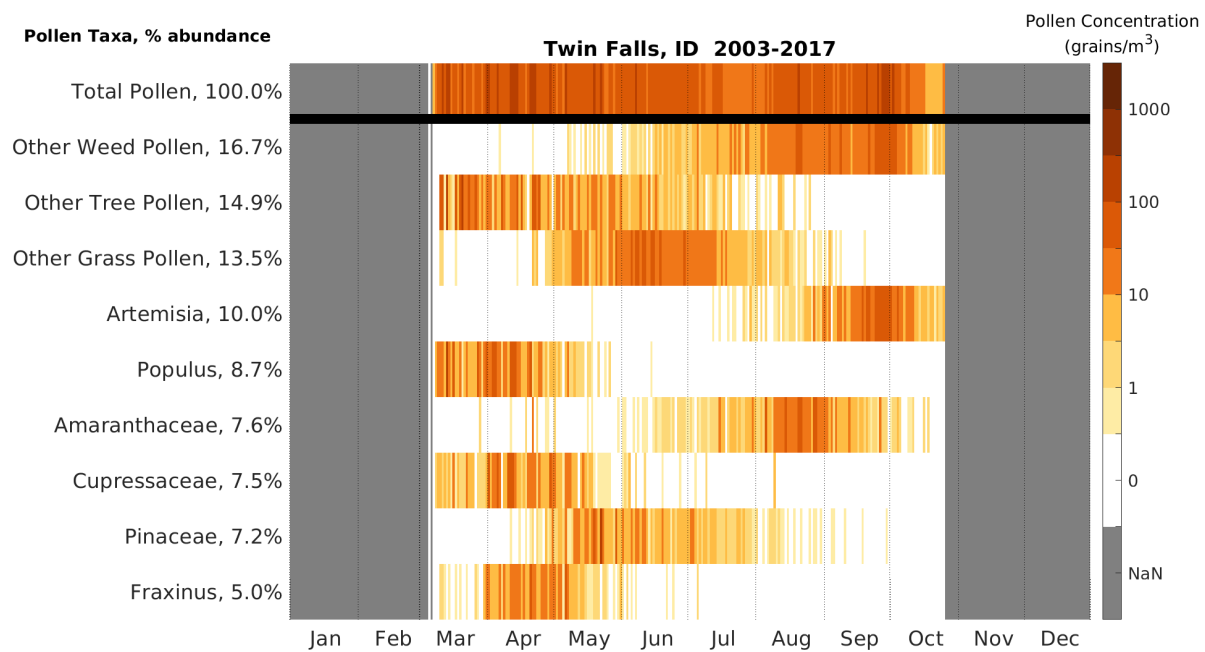
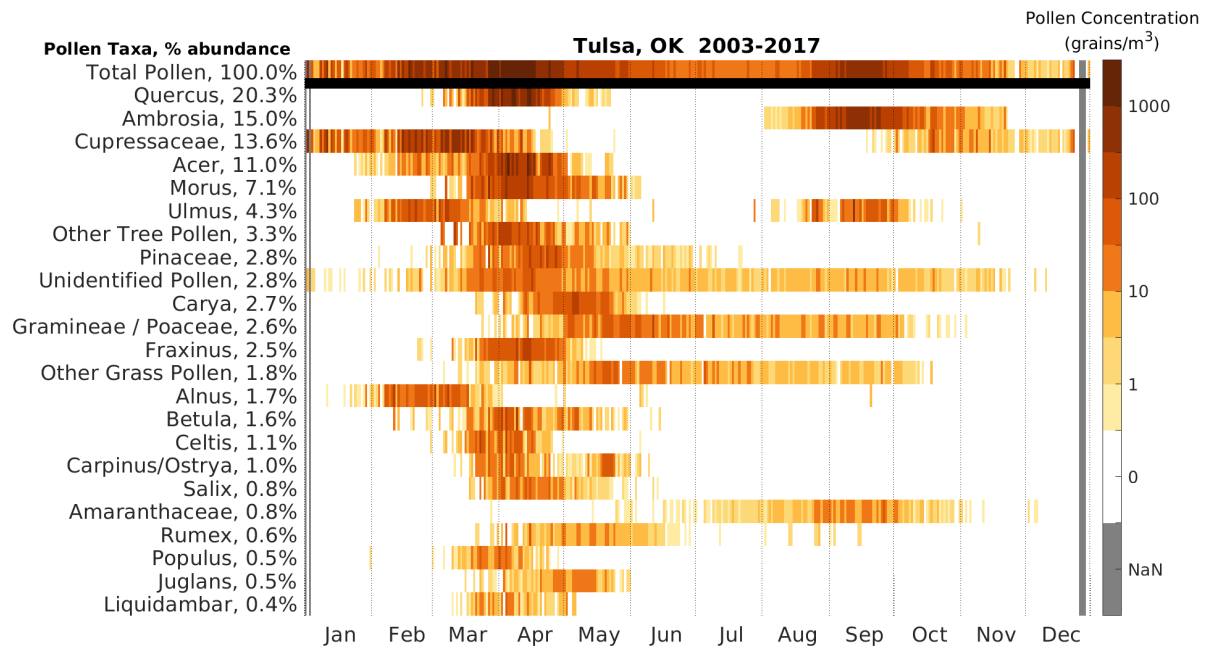


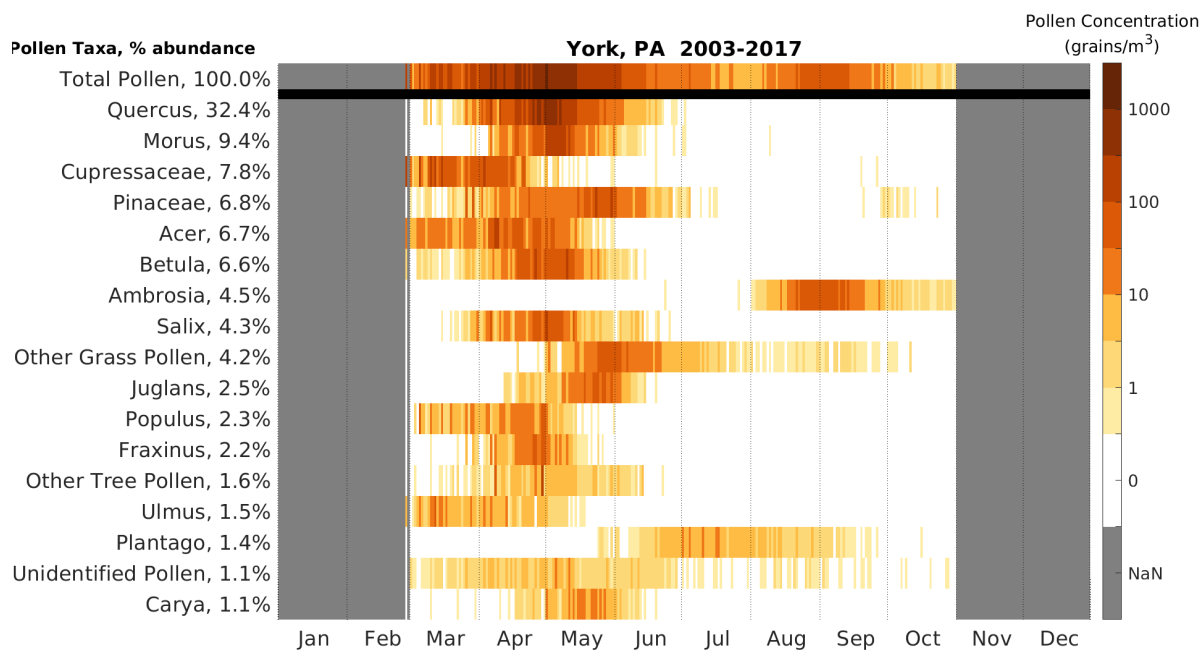
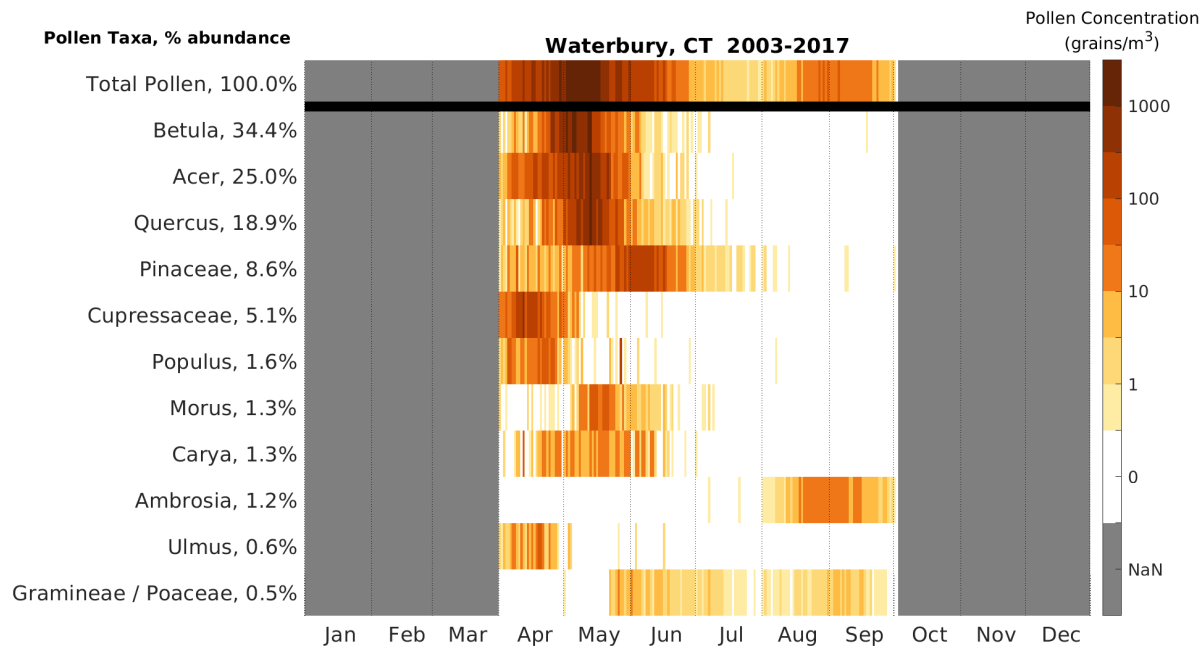






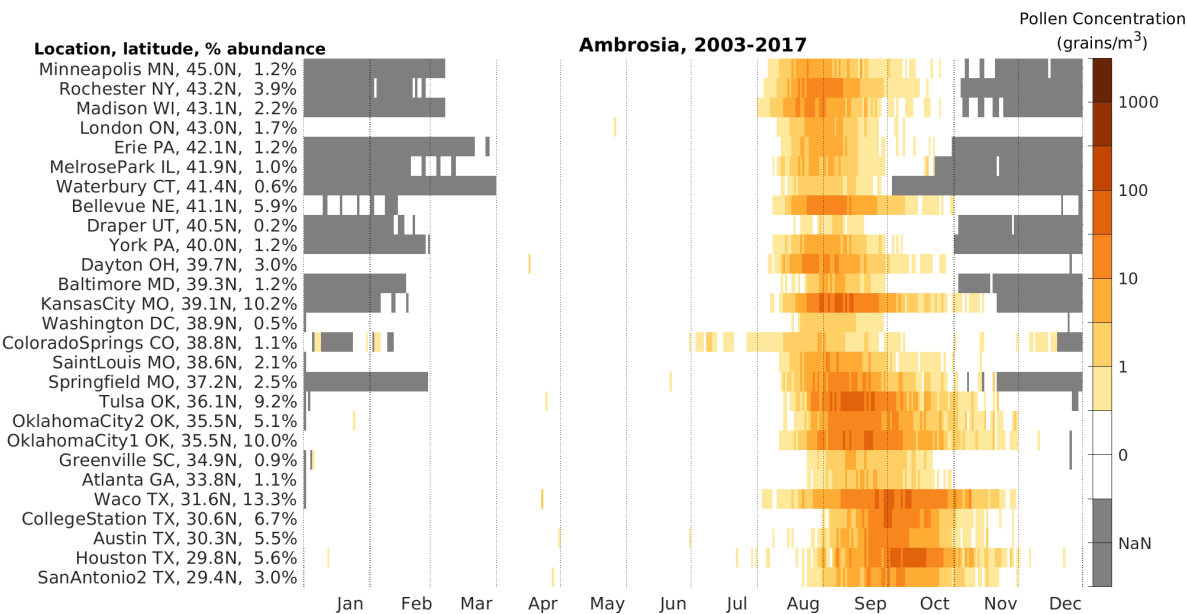
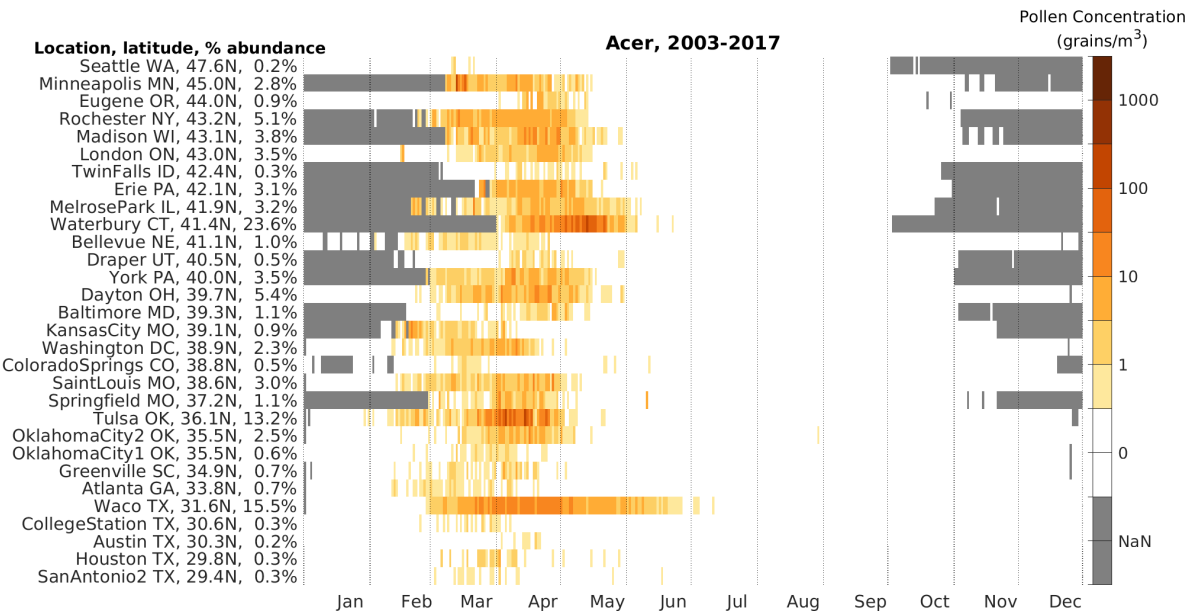


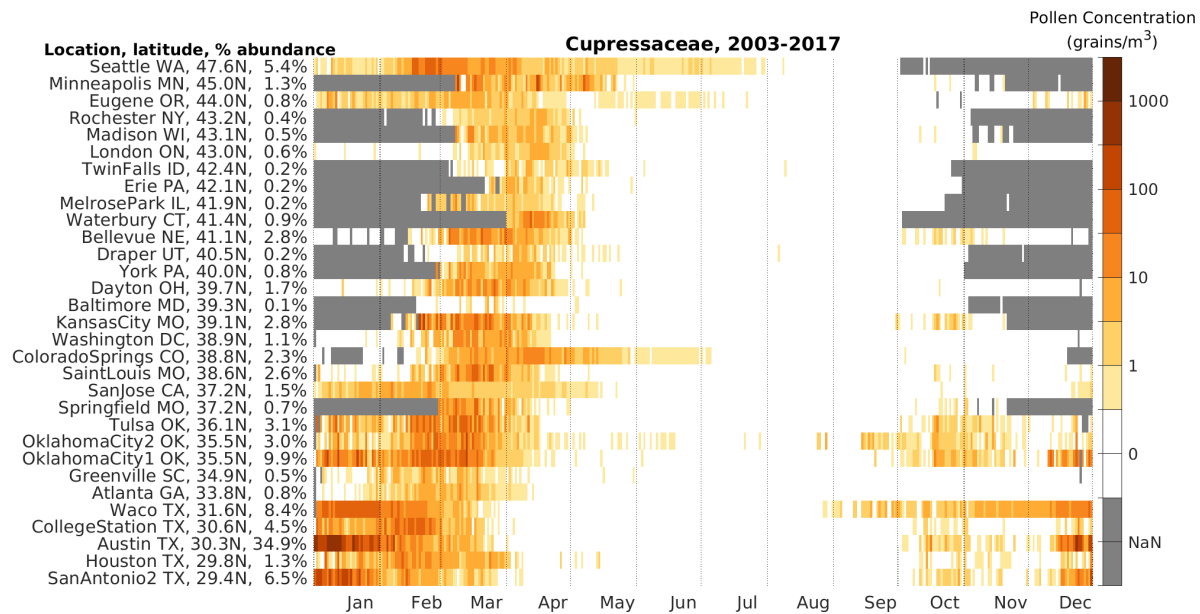
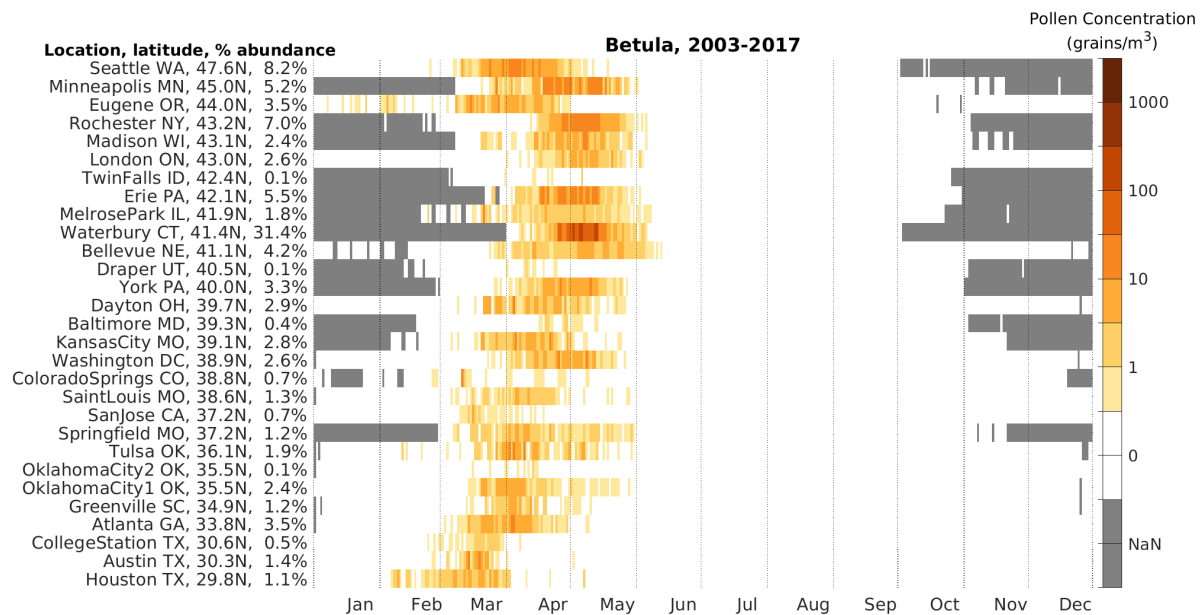


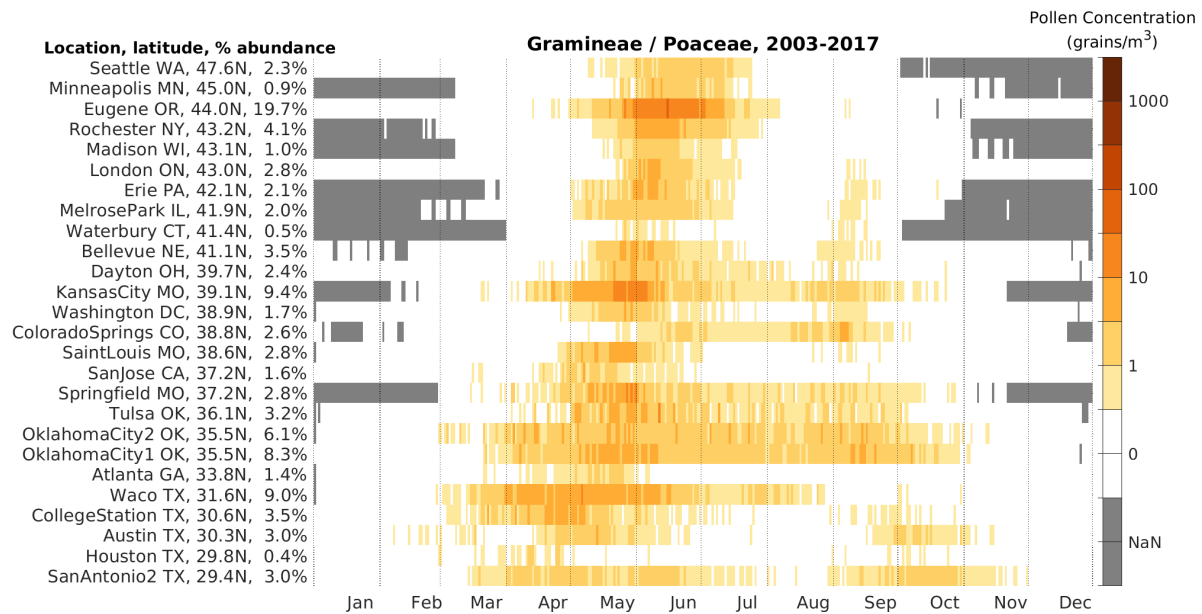
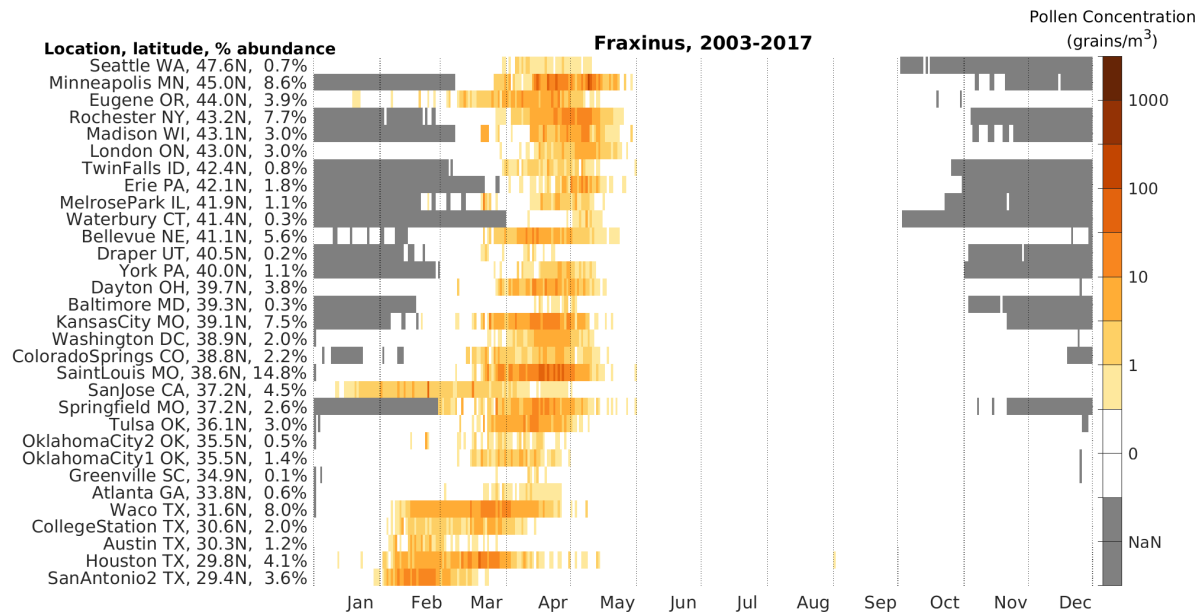


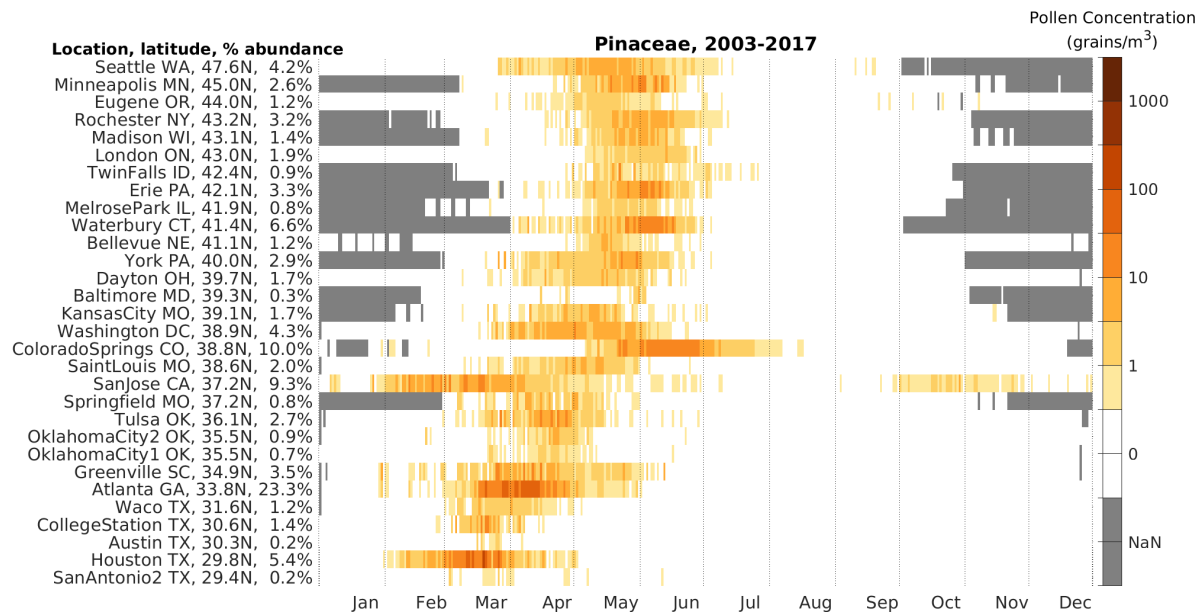
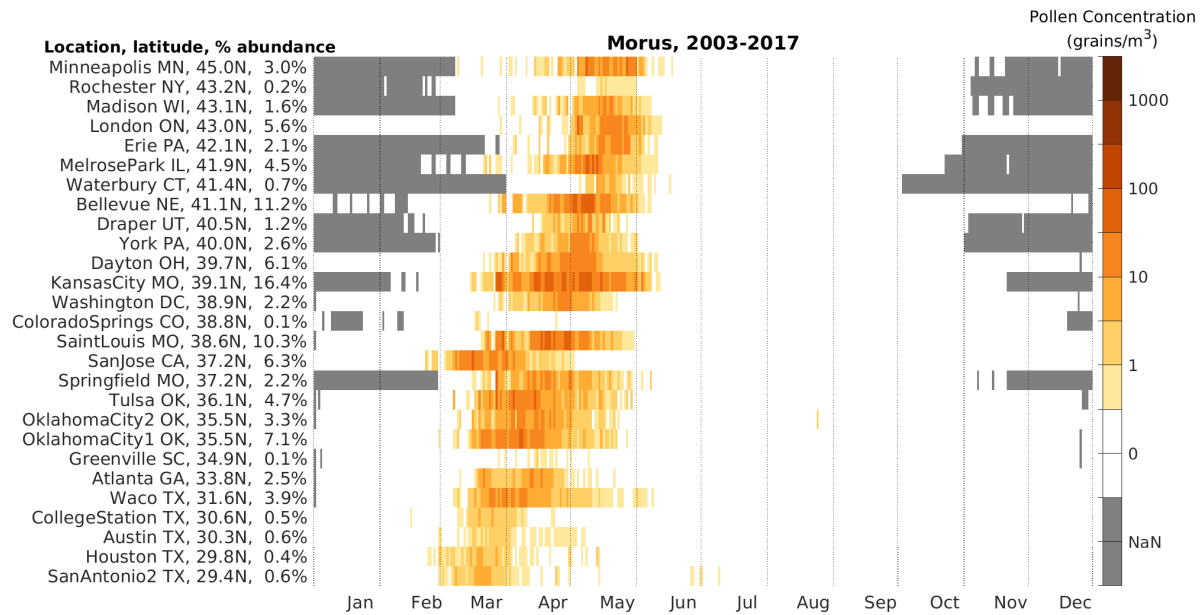
Taxon-specific pollen calendars

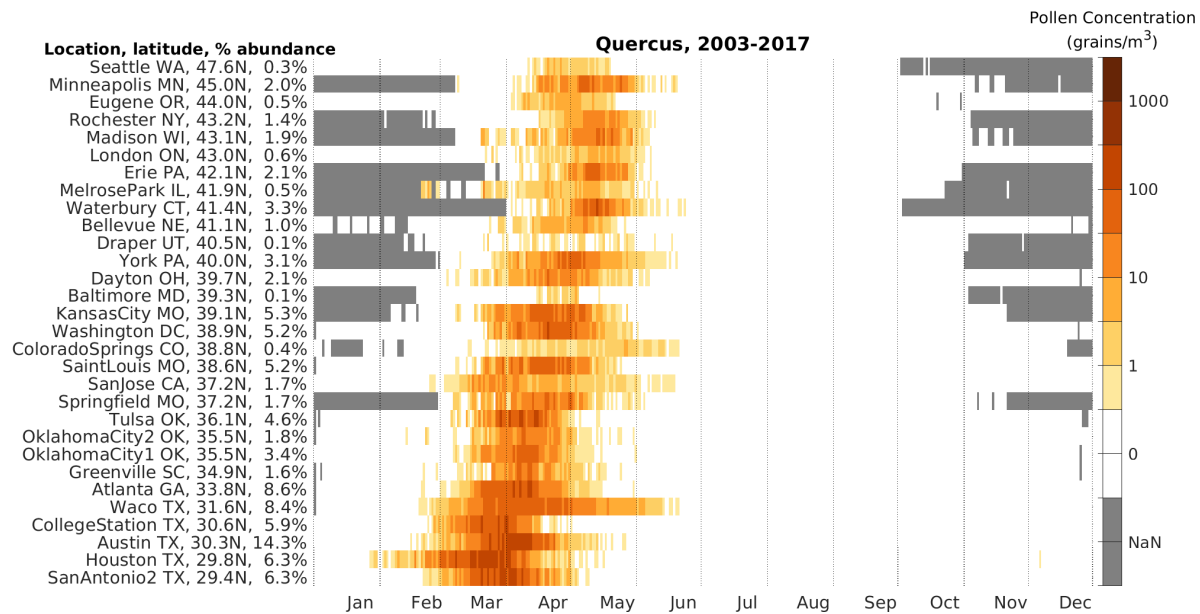
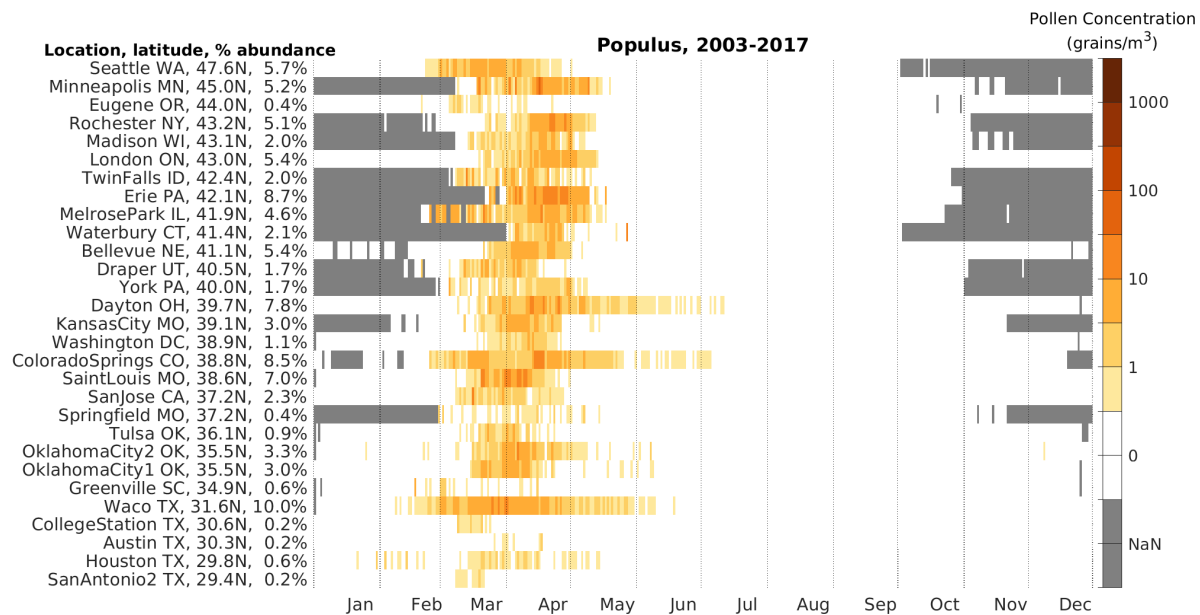
Pollen calendars for pollen taxon listed in title. Daily long-term mean of pollen concentration, 2003-2017. NAB stations are ordered by latitude. For each taxon, the percentage abundance is the ratio of the long-term mean API at that station to the API summed over all NAB stations with data. Missing data are shaded grey and denoted NaN in the colorbar. Only NAB stations with mean API over 150 grain-day/m3 are shown.

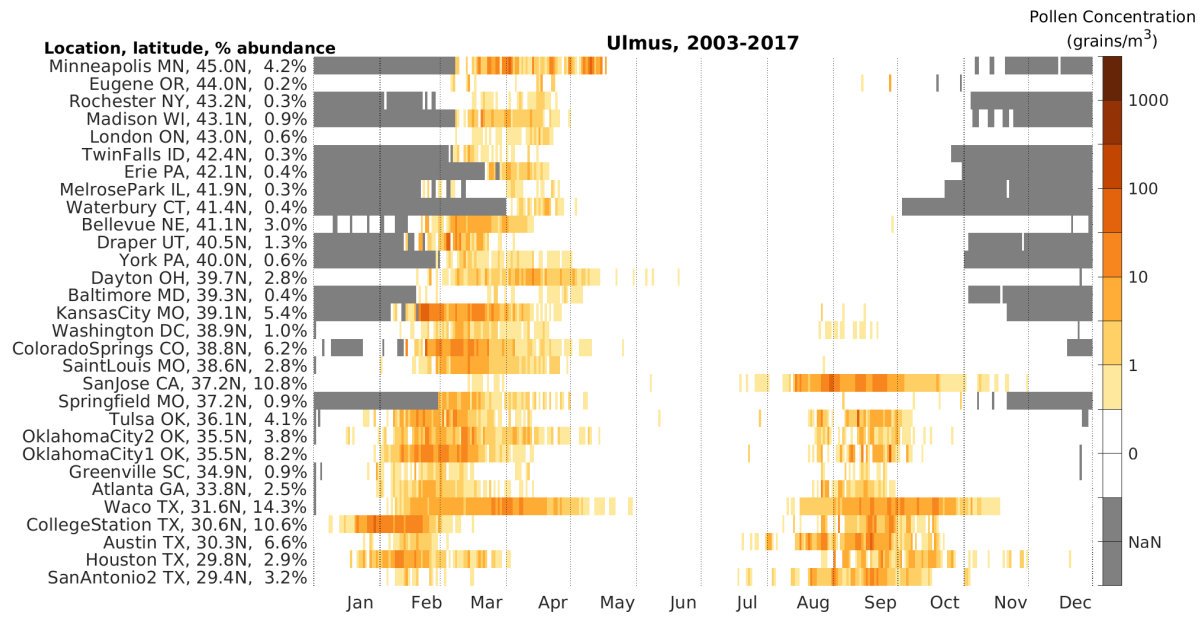






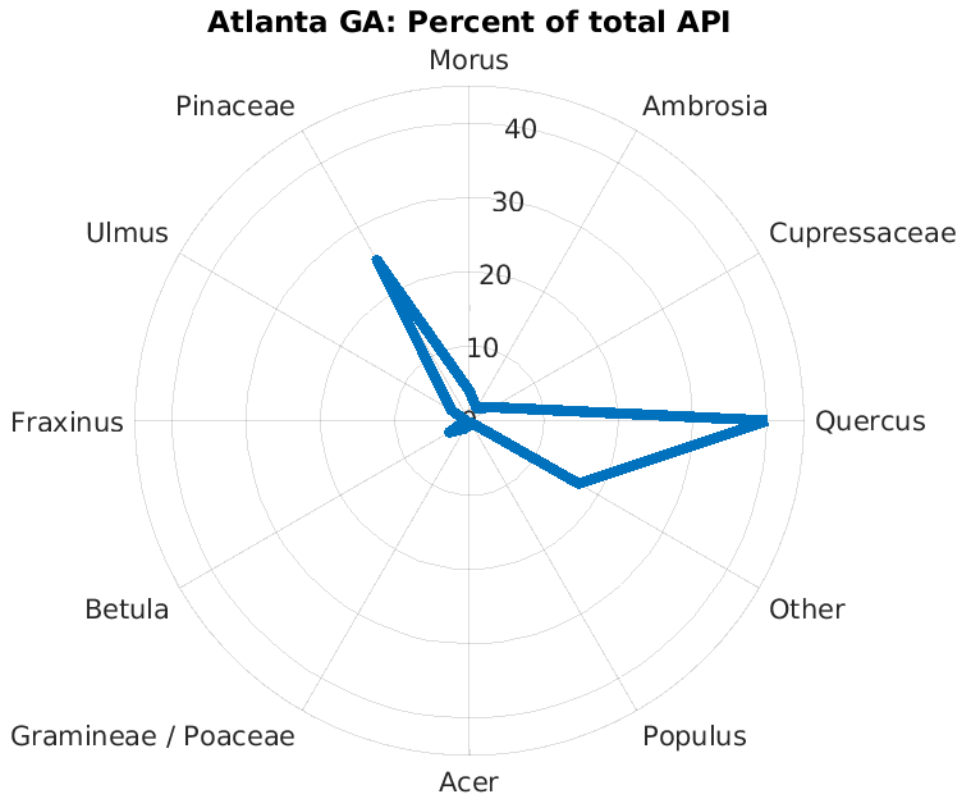




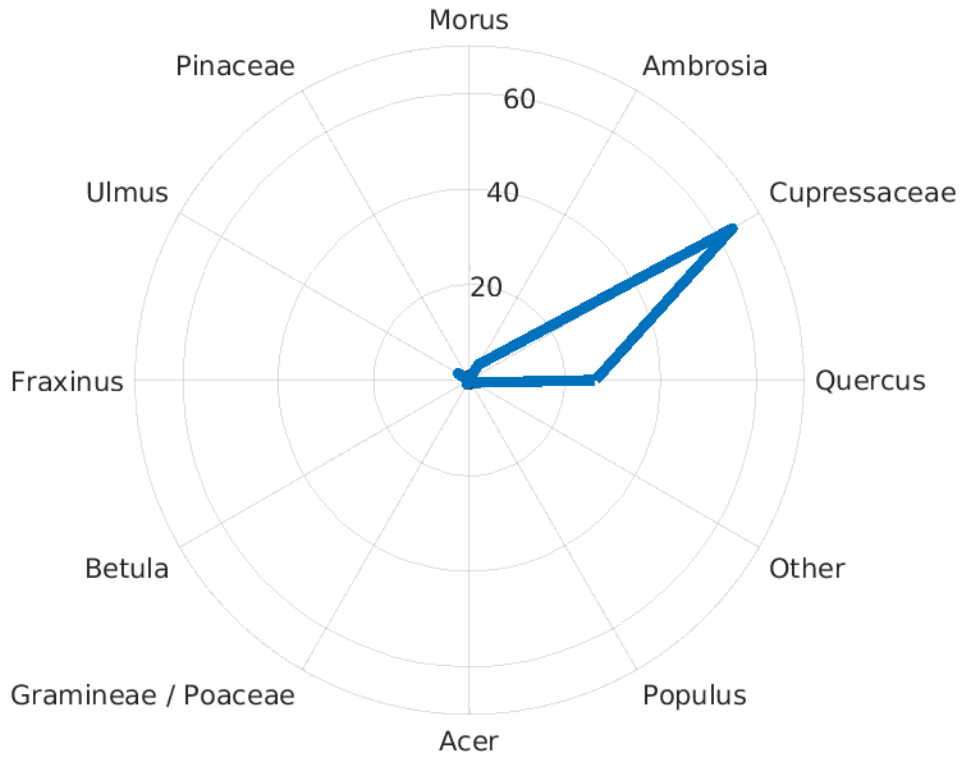


Radar Charts

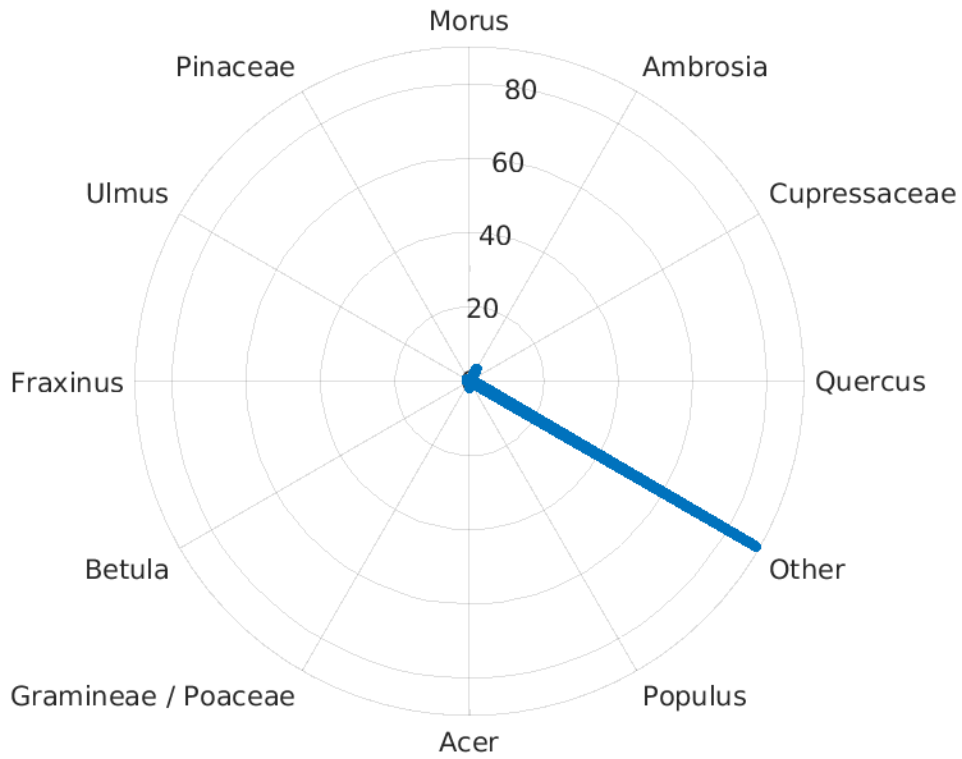
Radar charts for the station at the city and state or province listed in title of figure. Percent total API for the station for the 11 allergenic pollen taxa and the combined category of “Other” which is sum of all the other sampled allergenic pollen taxa.



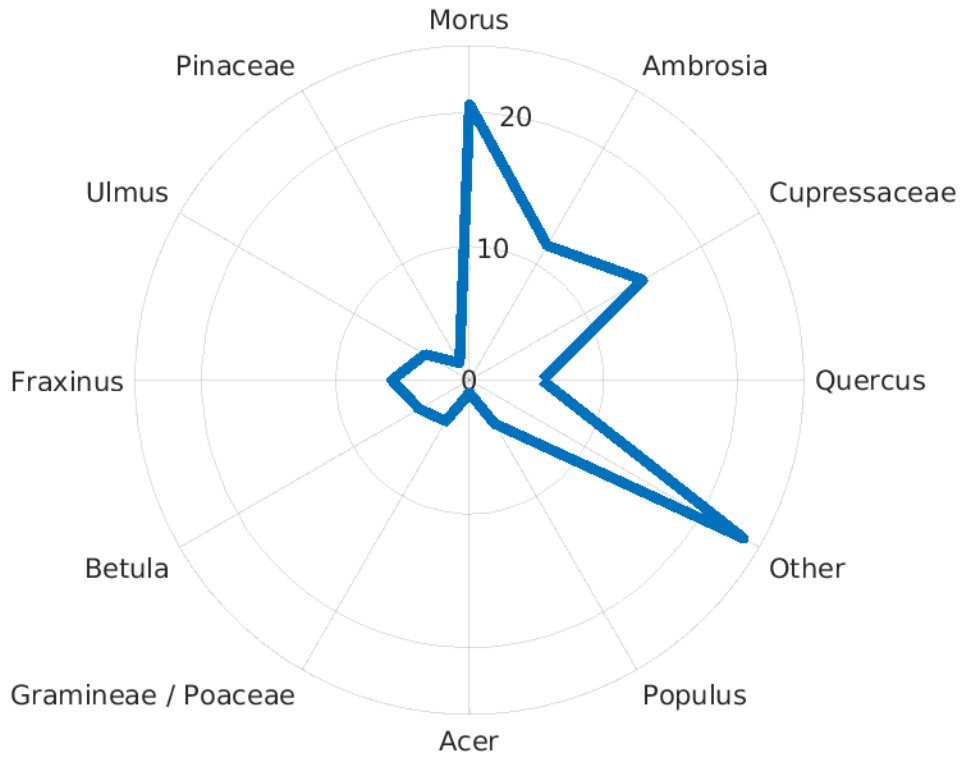
Austin TX: Percent of total API



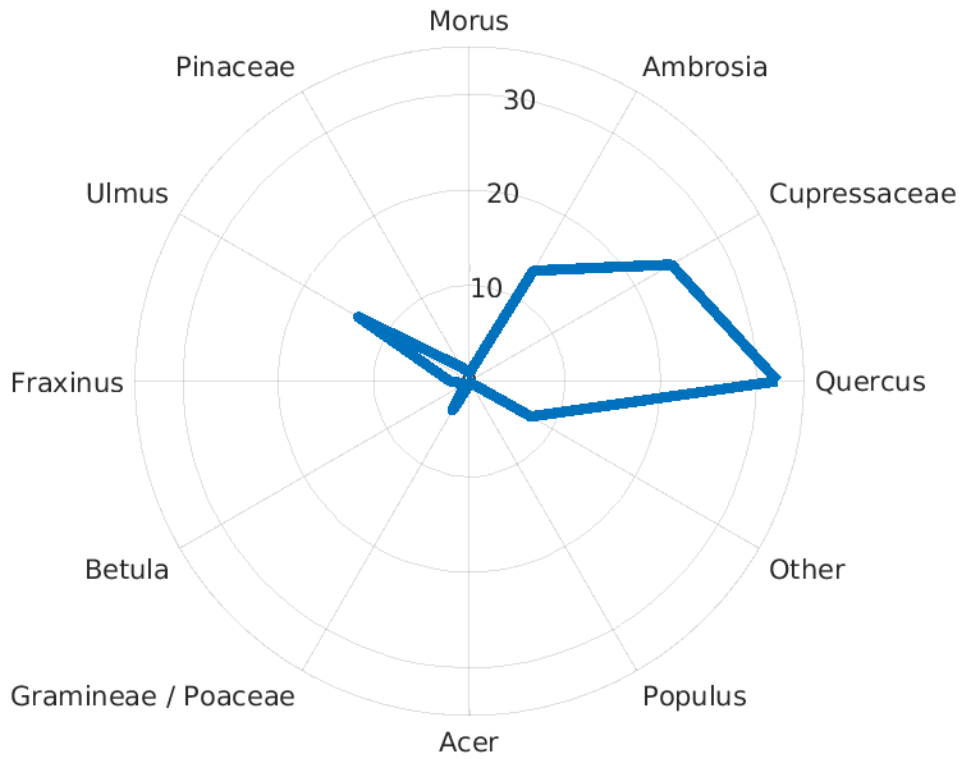
Baltimore MD: Percent of total API



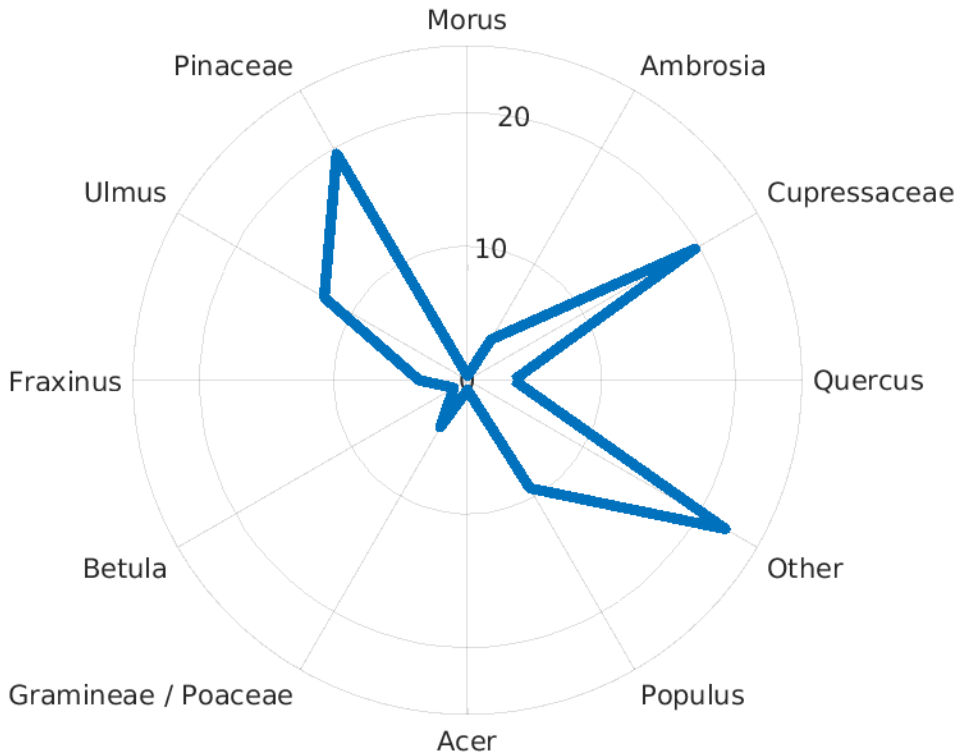
Bellevue NE: Percent of total API



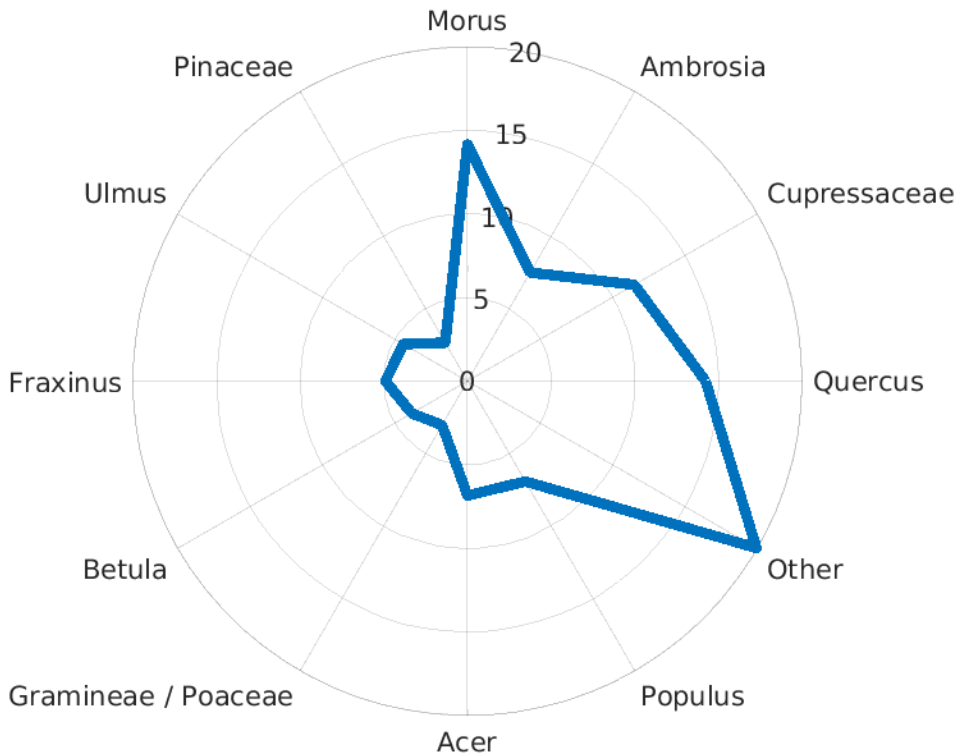
College Station TX: Percent of total API



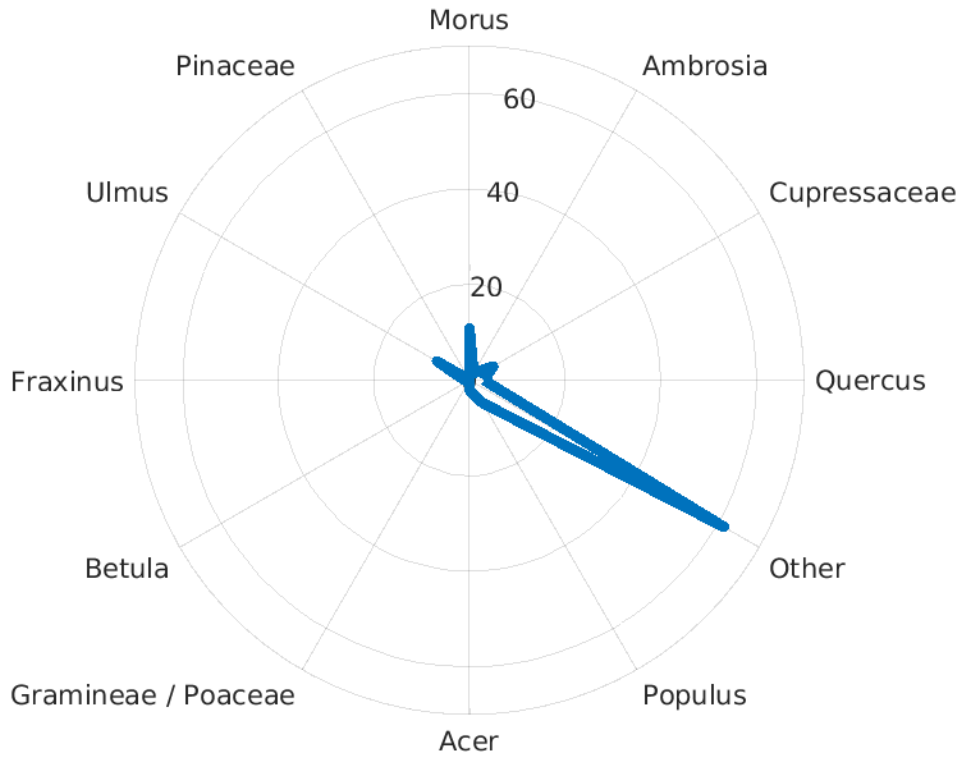
Colorado Springs CO: Percent of total API



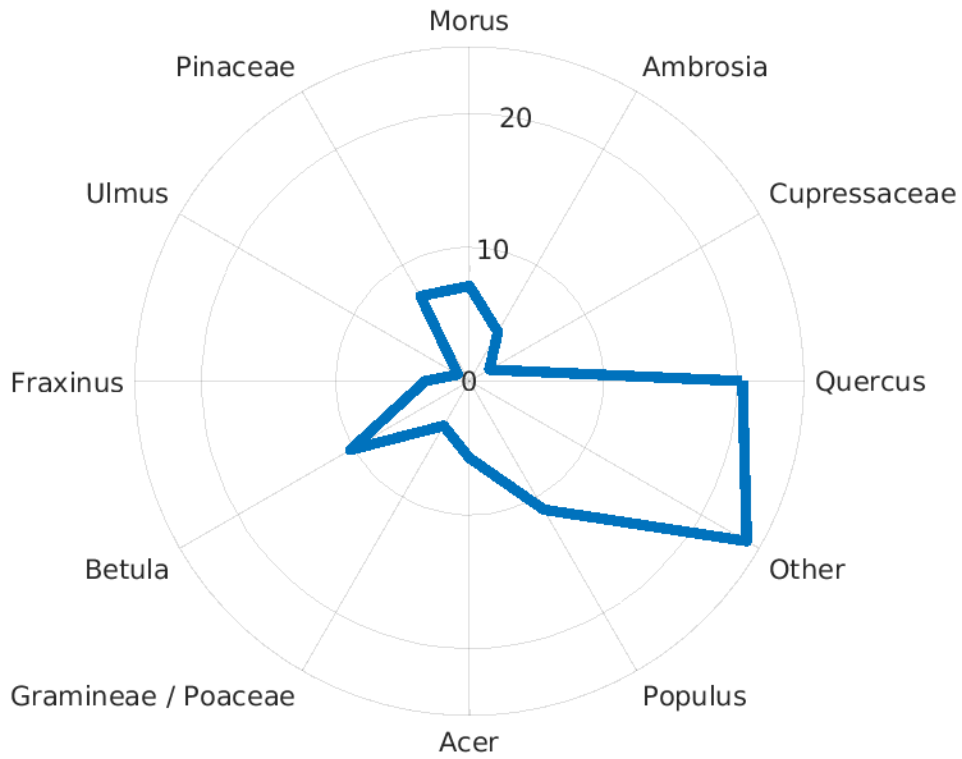
Dayton OH: Percent of total API



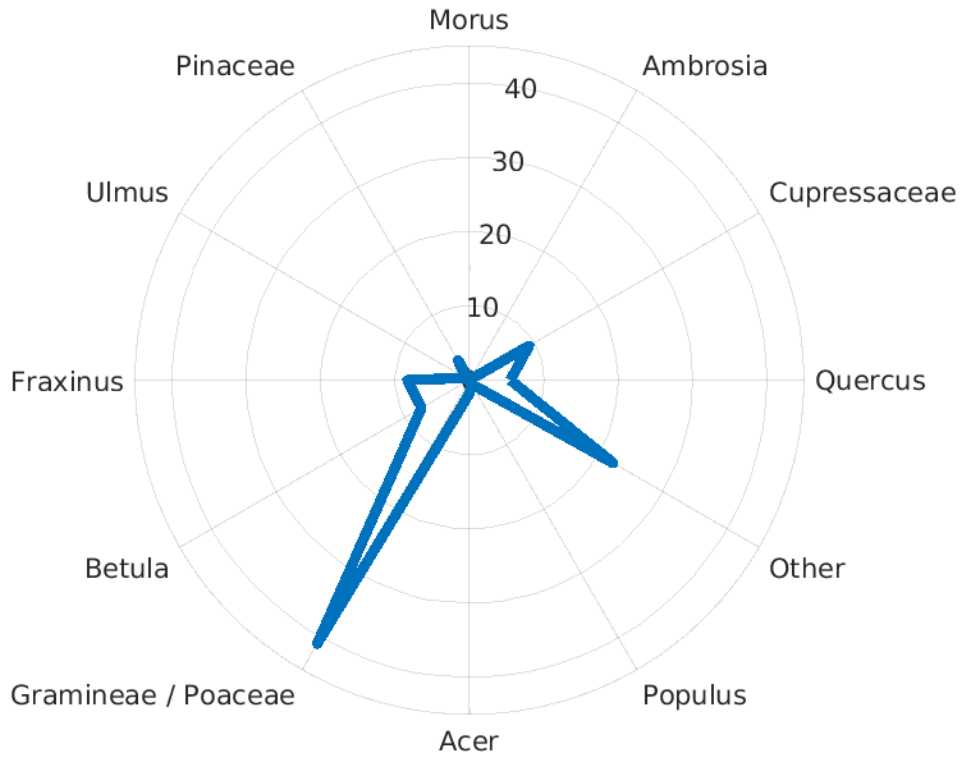
Draper UT: Percent of total API



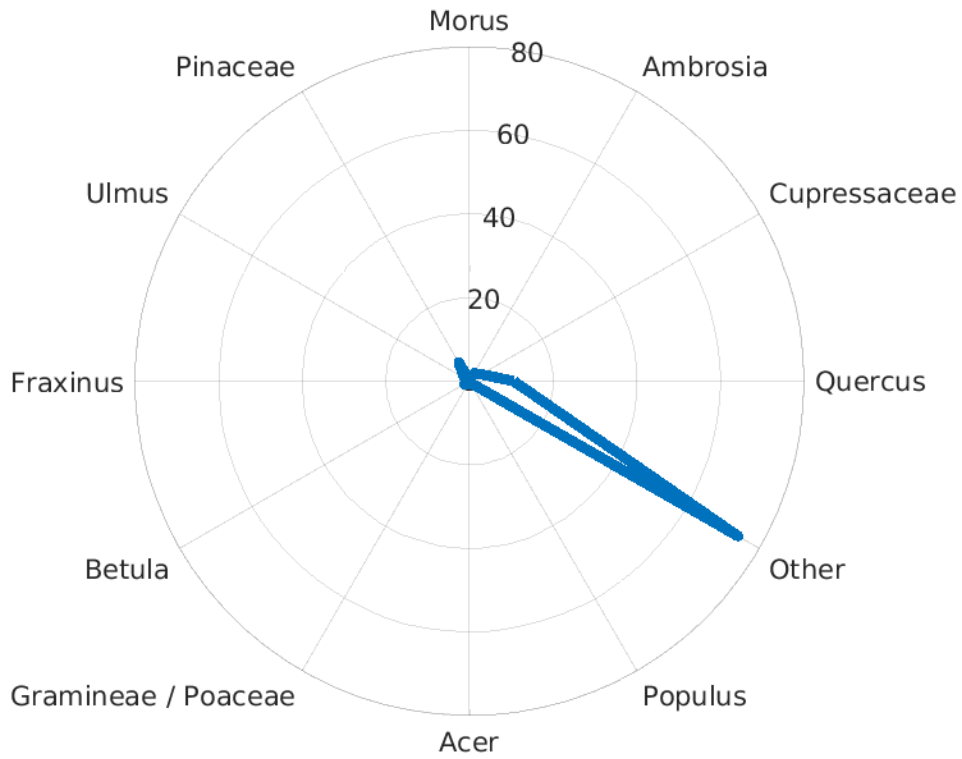
Erie PA: Percent of total API



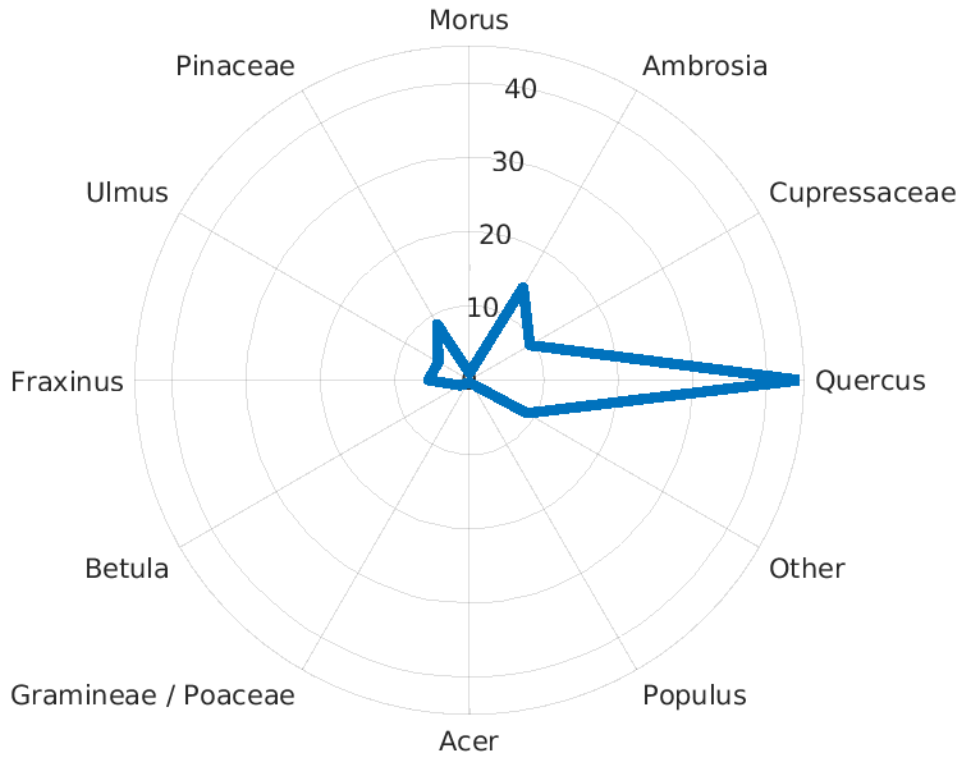
Eugene OR: Percent of total API



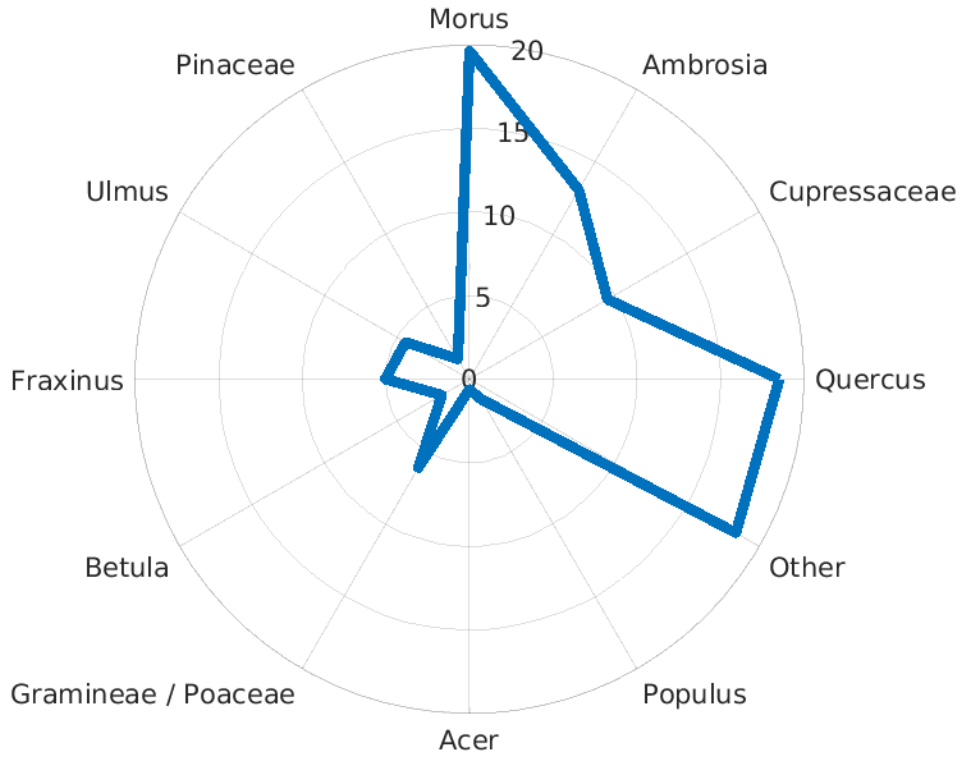
Greenville SC: Percent of total API



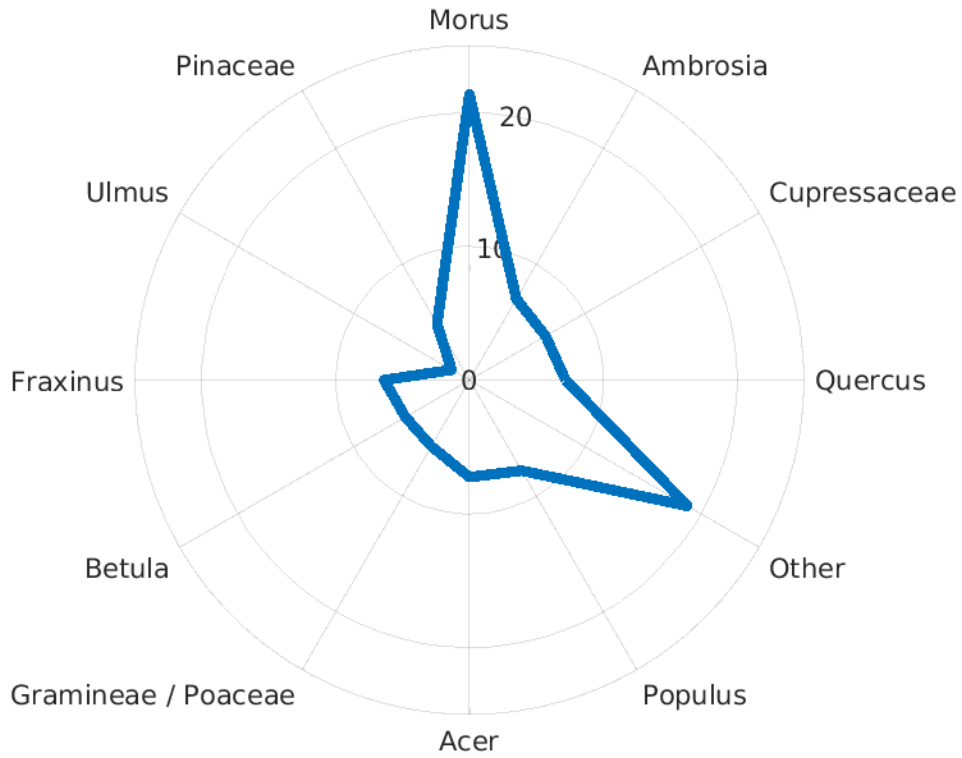
Houston TX: Percent of total API



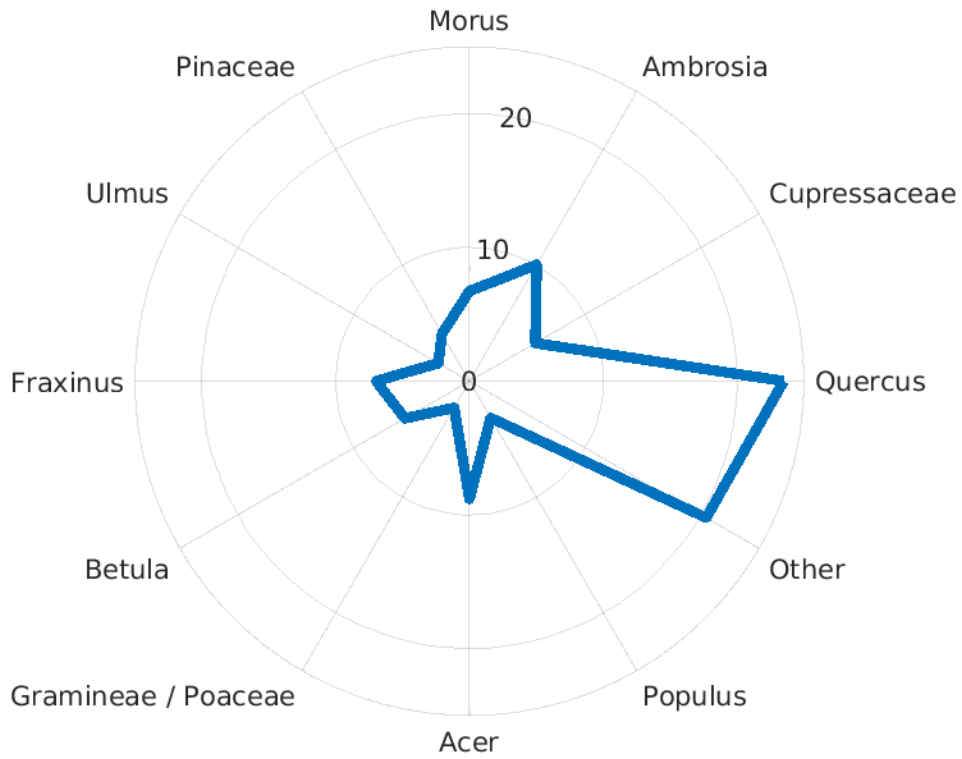
Kansas City MO: Percent of total API



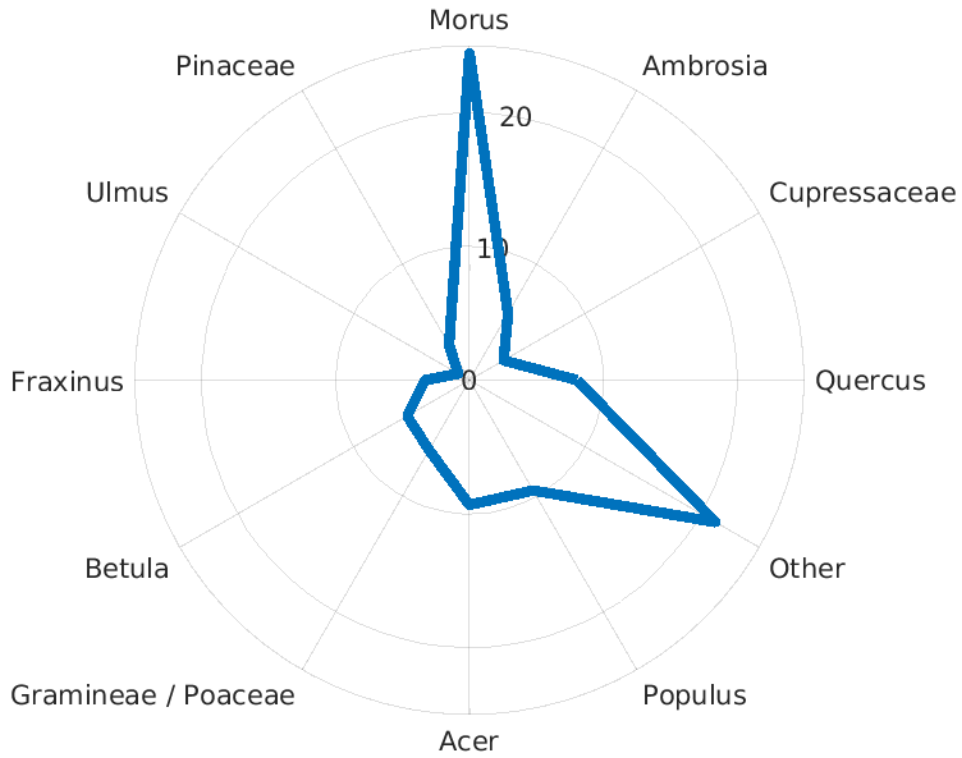
London ON: Percent of total API



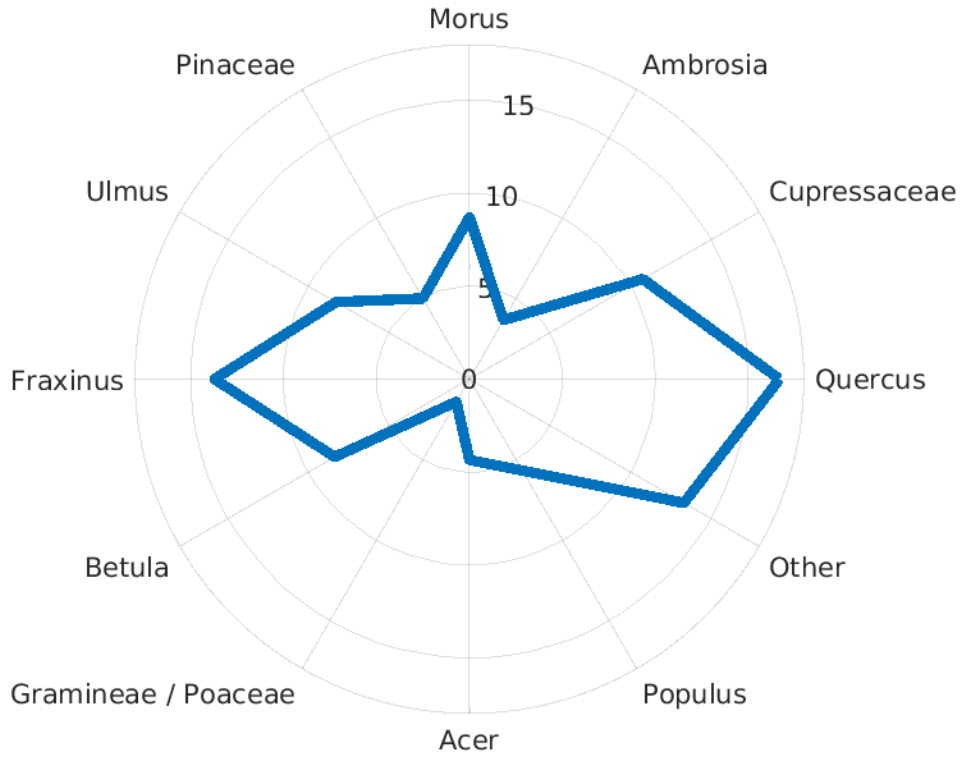
Madison WI: Percent of total API



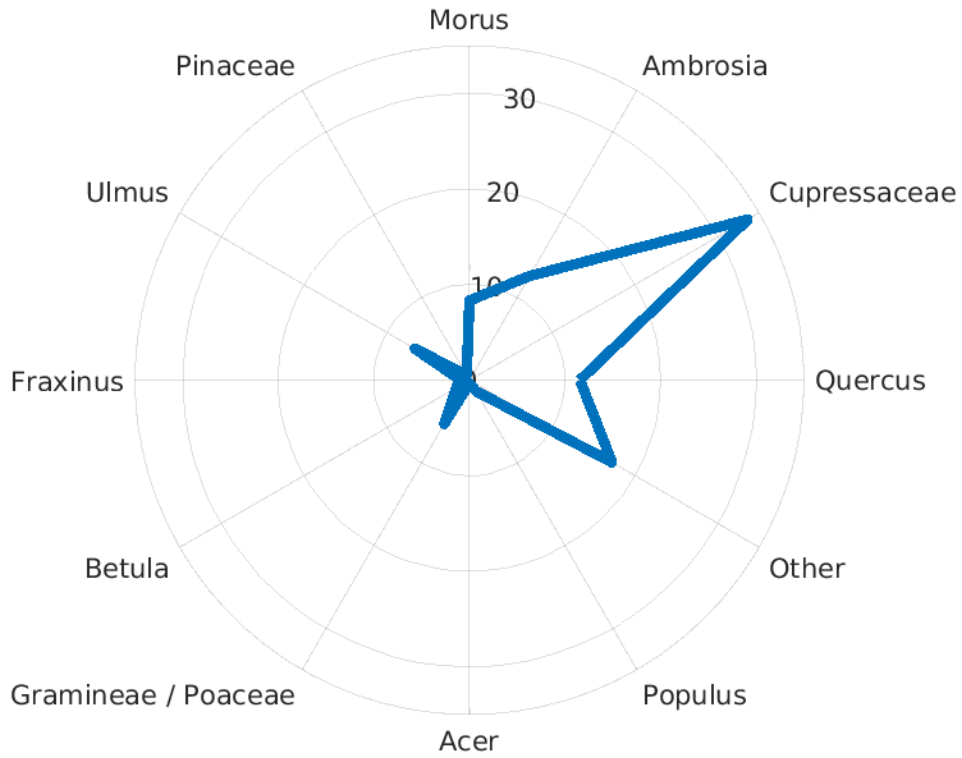
Melrose Park IL: Percent of total API



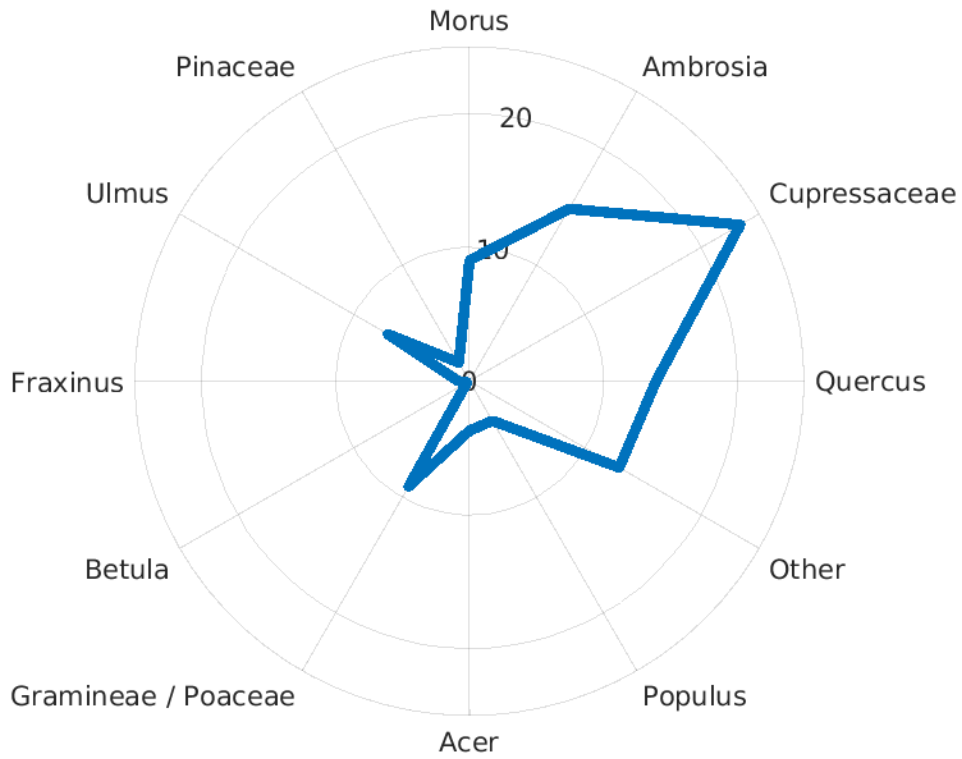
Minneapolis MN: Percent of total API



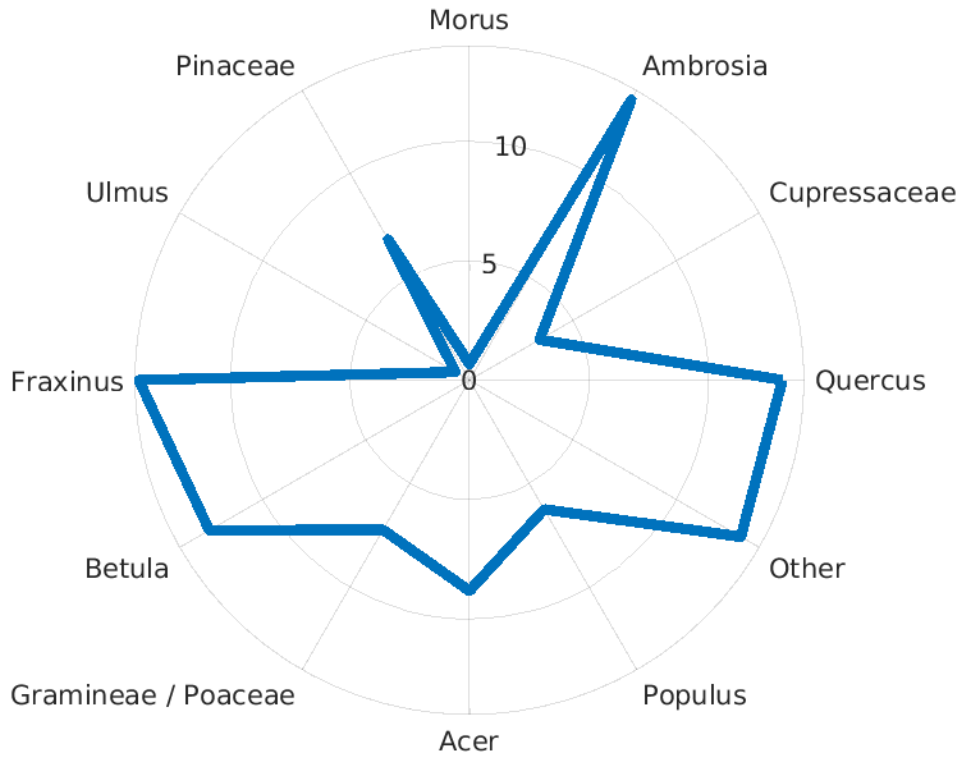
Oklahoma City OK: Percent of total API



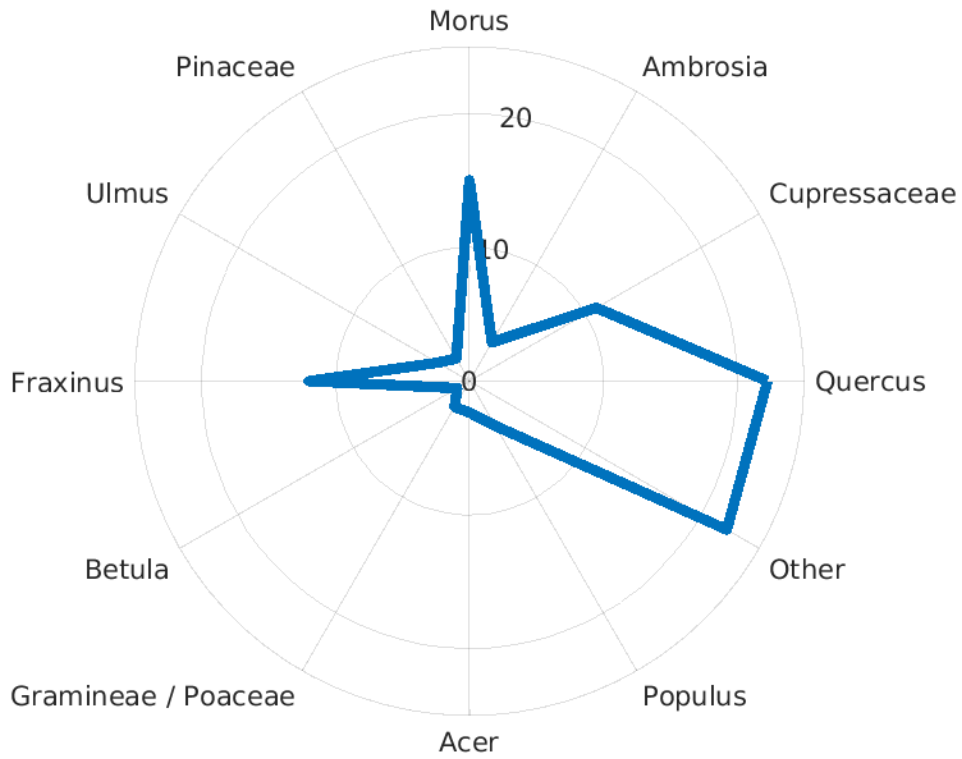
Oklahoma City OK: Percent of total API



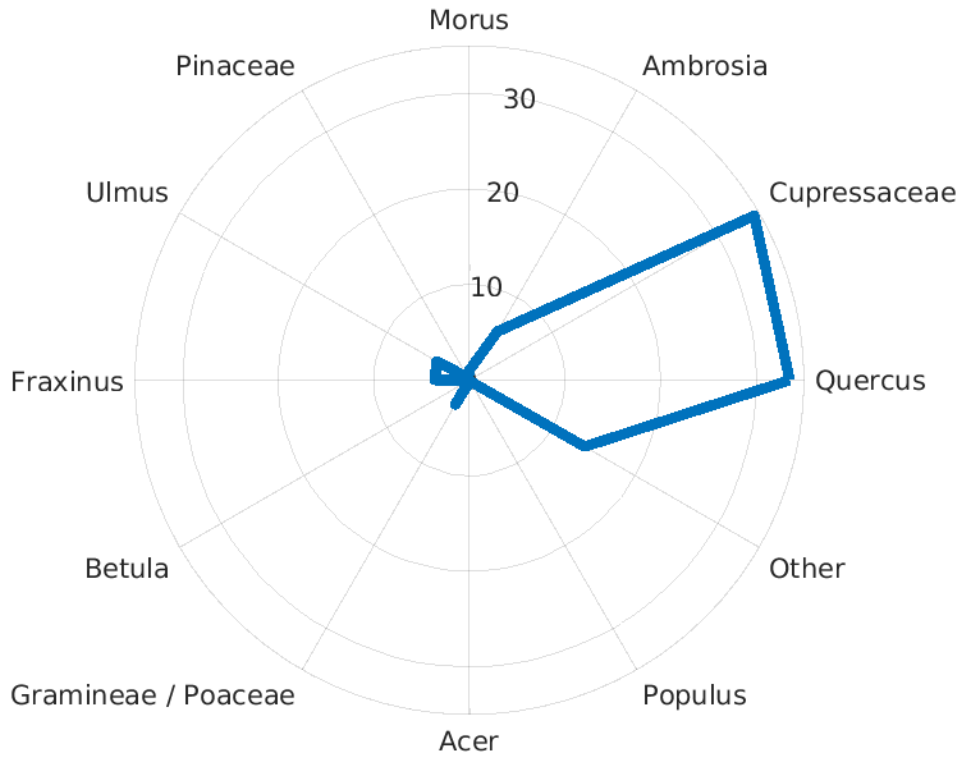
Rochester NY: Percent of total API



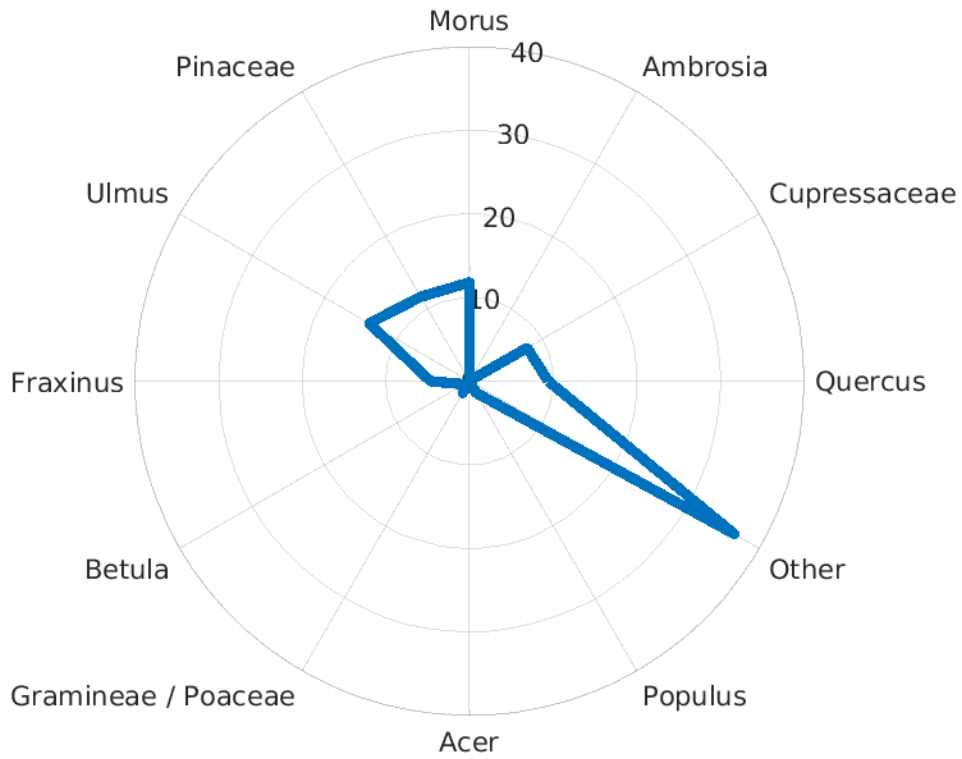
Saint Louis MO: Percent of total API



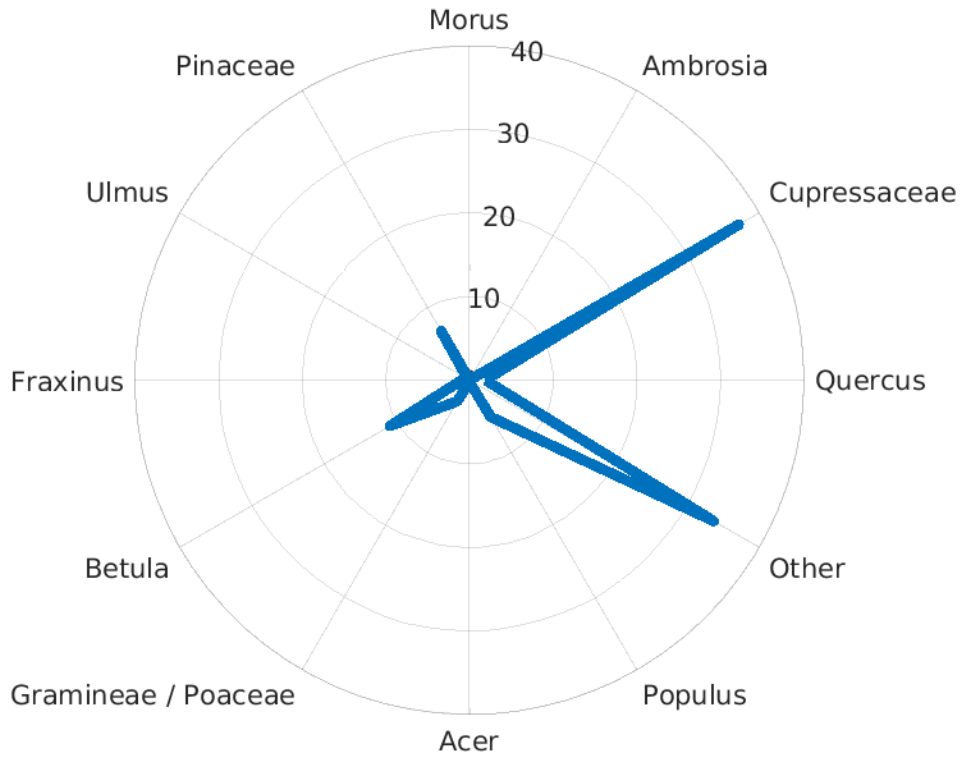
San Antonio TX: Percent of total API



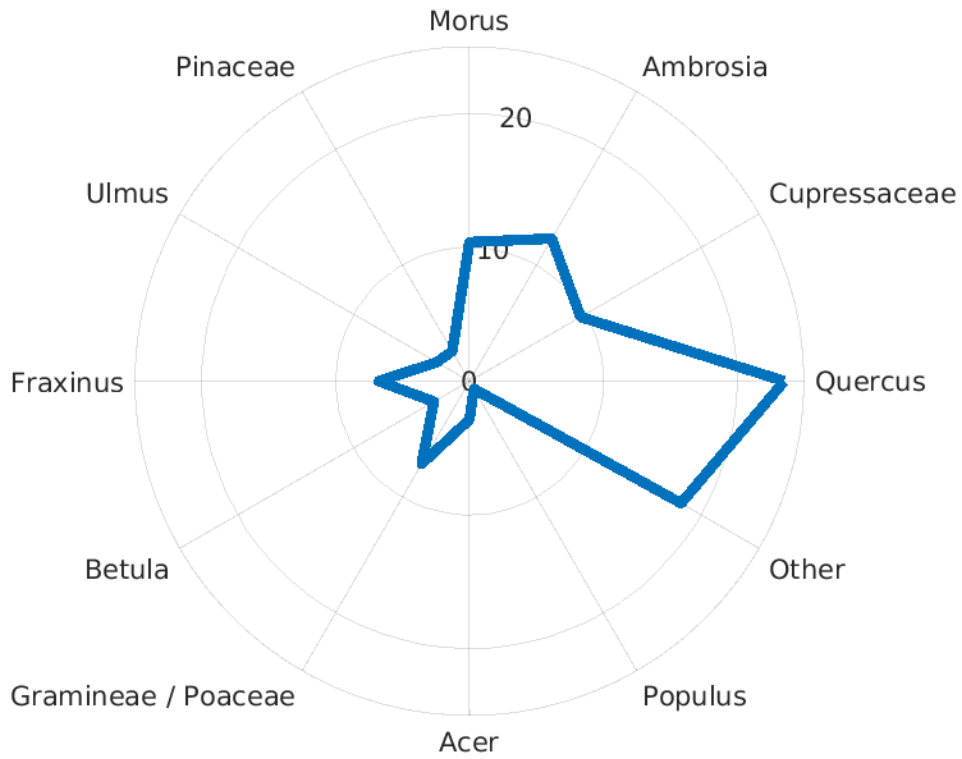
San Jose CA: Percent of total API



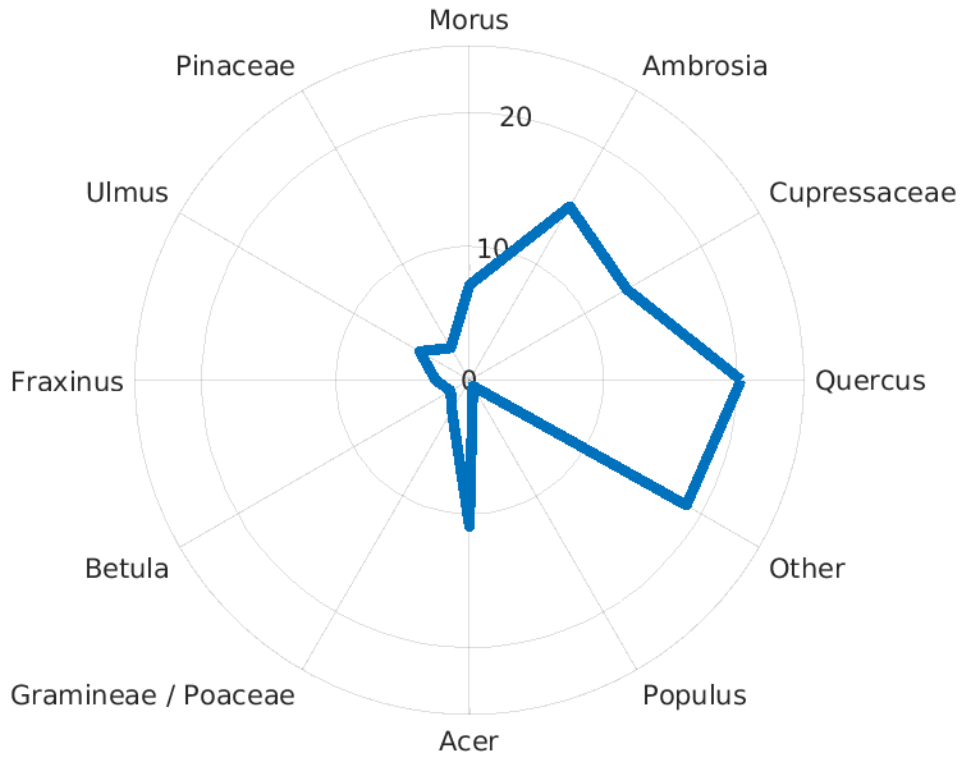
Seattle WA: Percent of total API



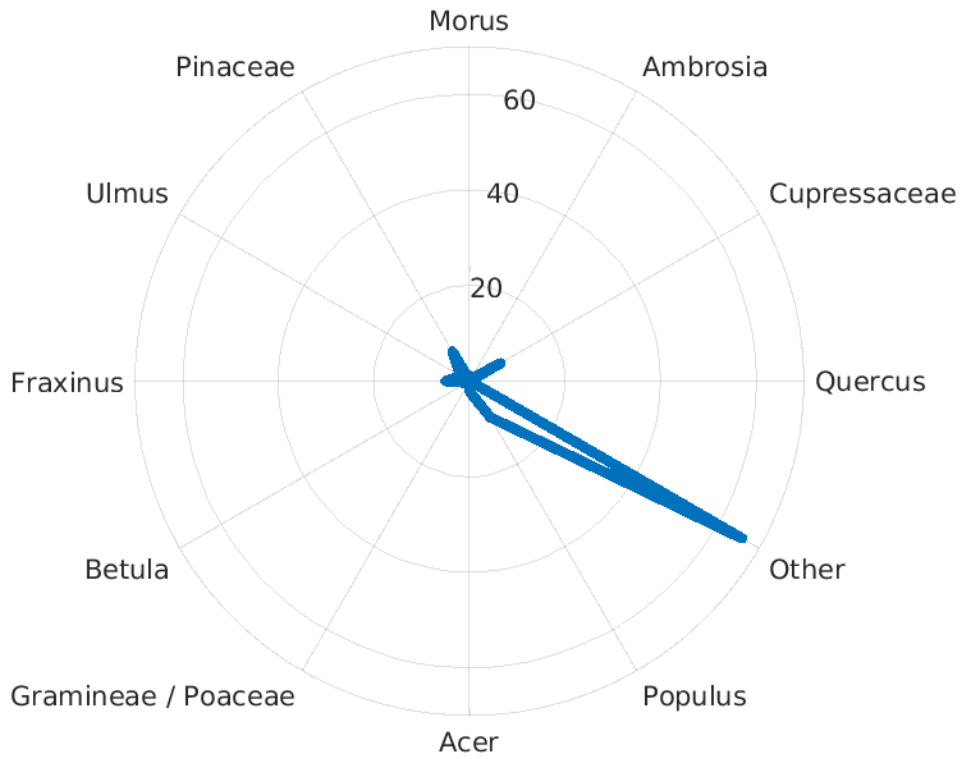
Springfield MO: Percent of total API



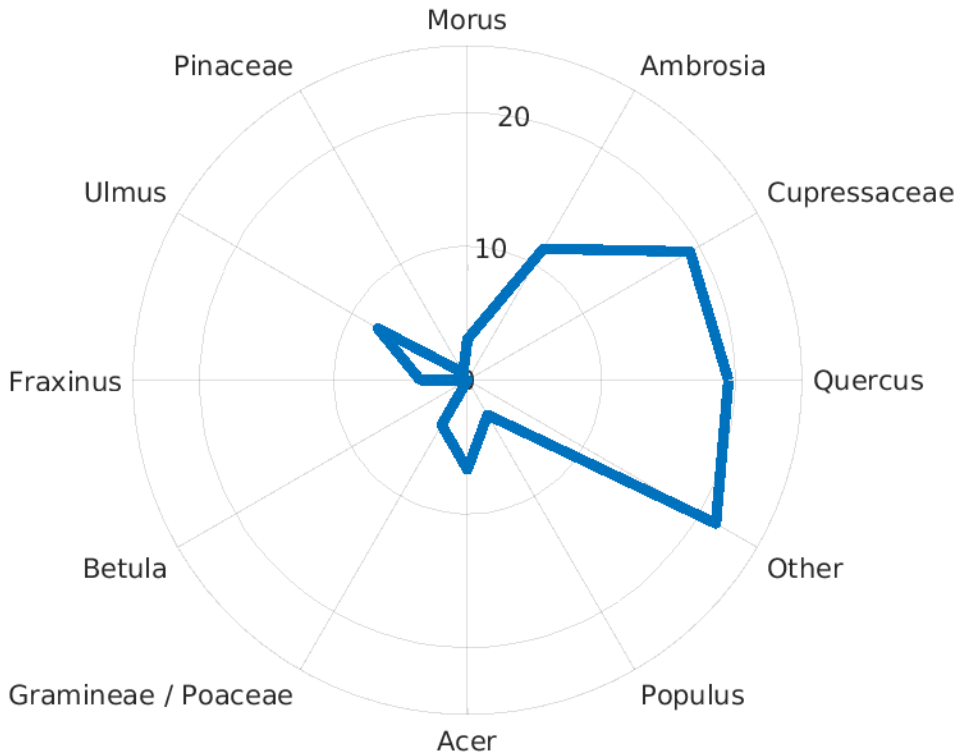
Tulsa OK: Percent of total API



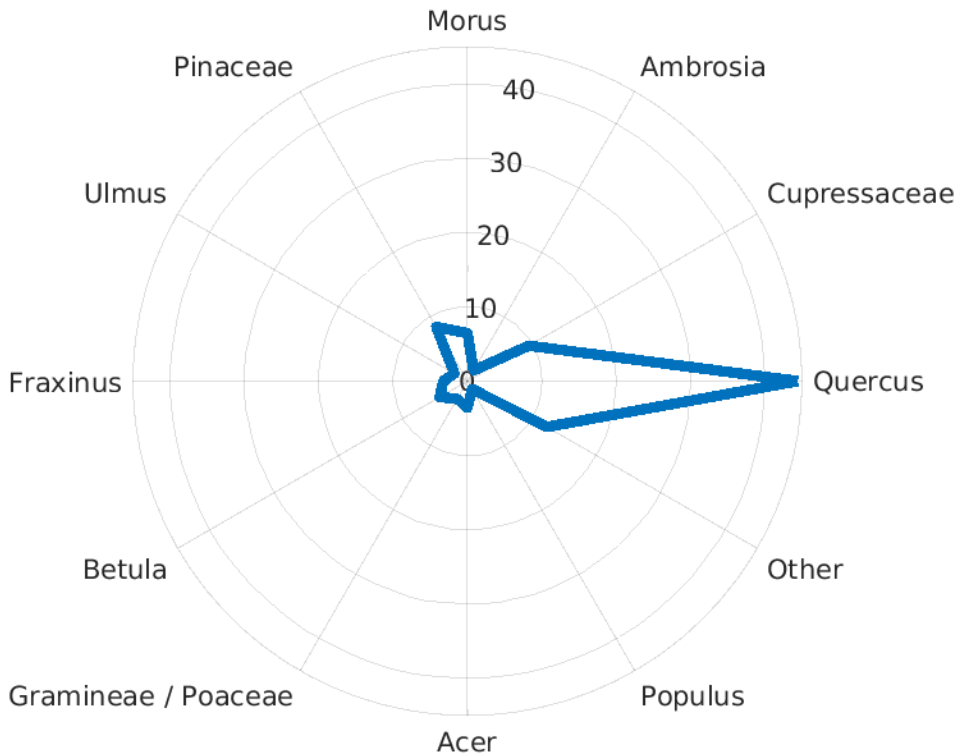
Twin Falls ID: Percent of total API



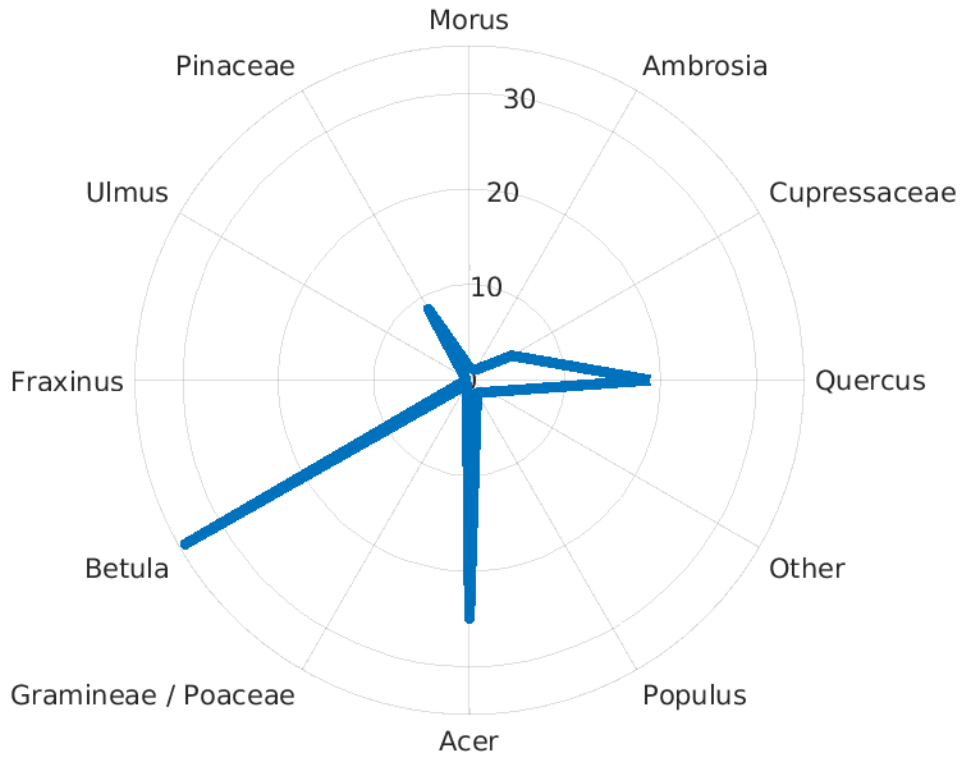
Waco TX: Percent of total API



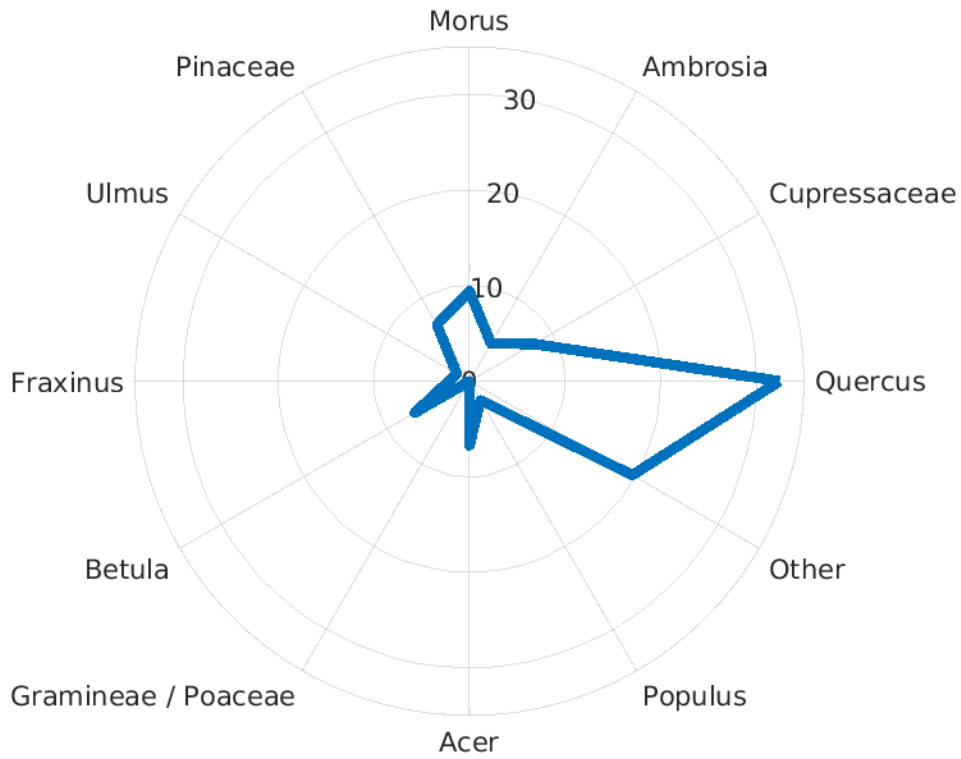
Washington DC: Percent of total API



Waterbury CT: Percent of total API



York PA: Percent of total API



Stacked Bar Chart

Stacked bar chart summarizes the information in the radar charts. The colors represent percent taxa of the total API for each of the 31 NAB stations for the 11 allergenic pollen taxa and the combined category of “Other”, which is sum of all the other sampled allergenic pollen taxa.

