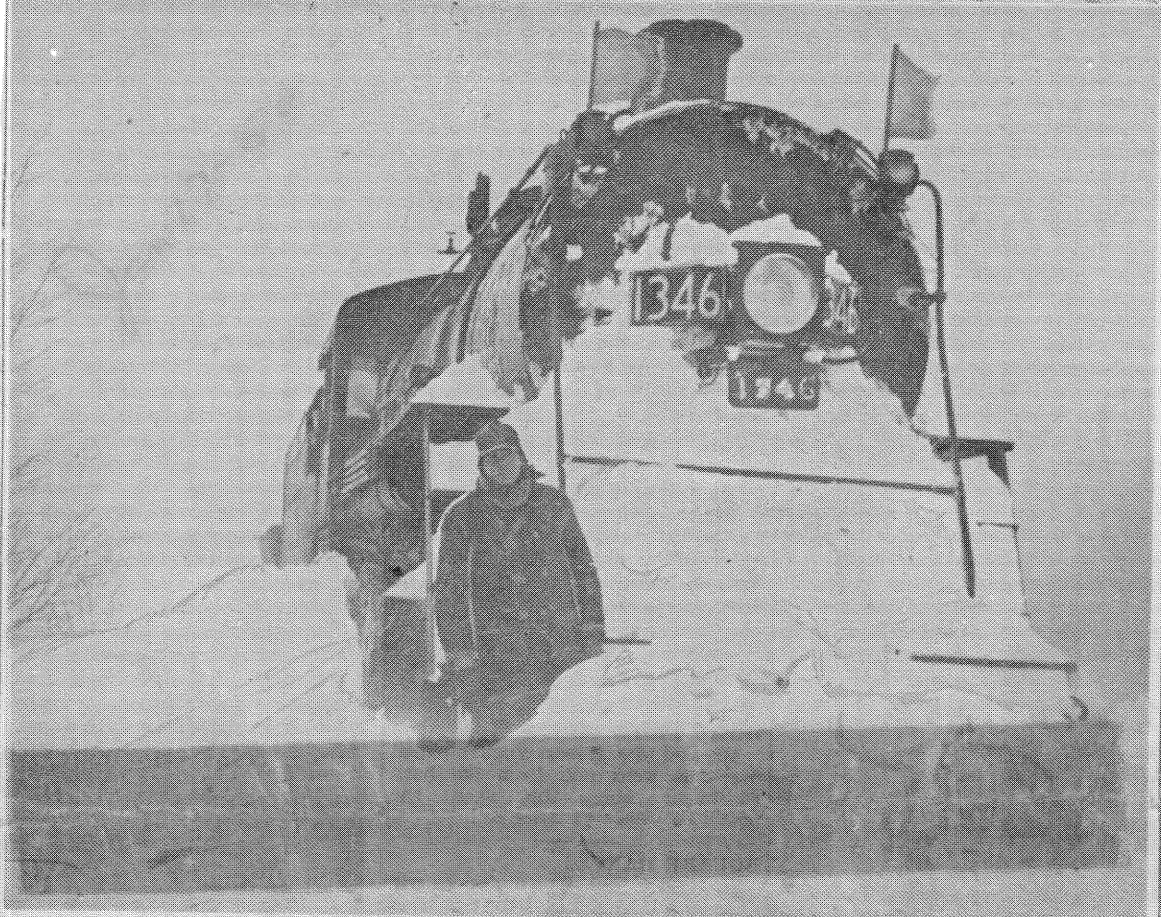
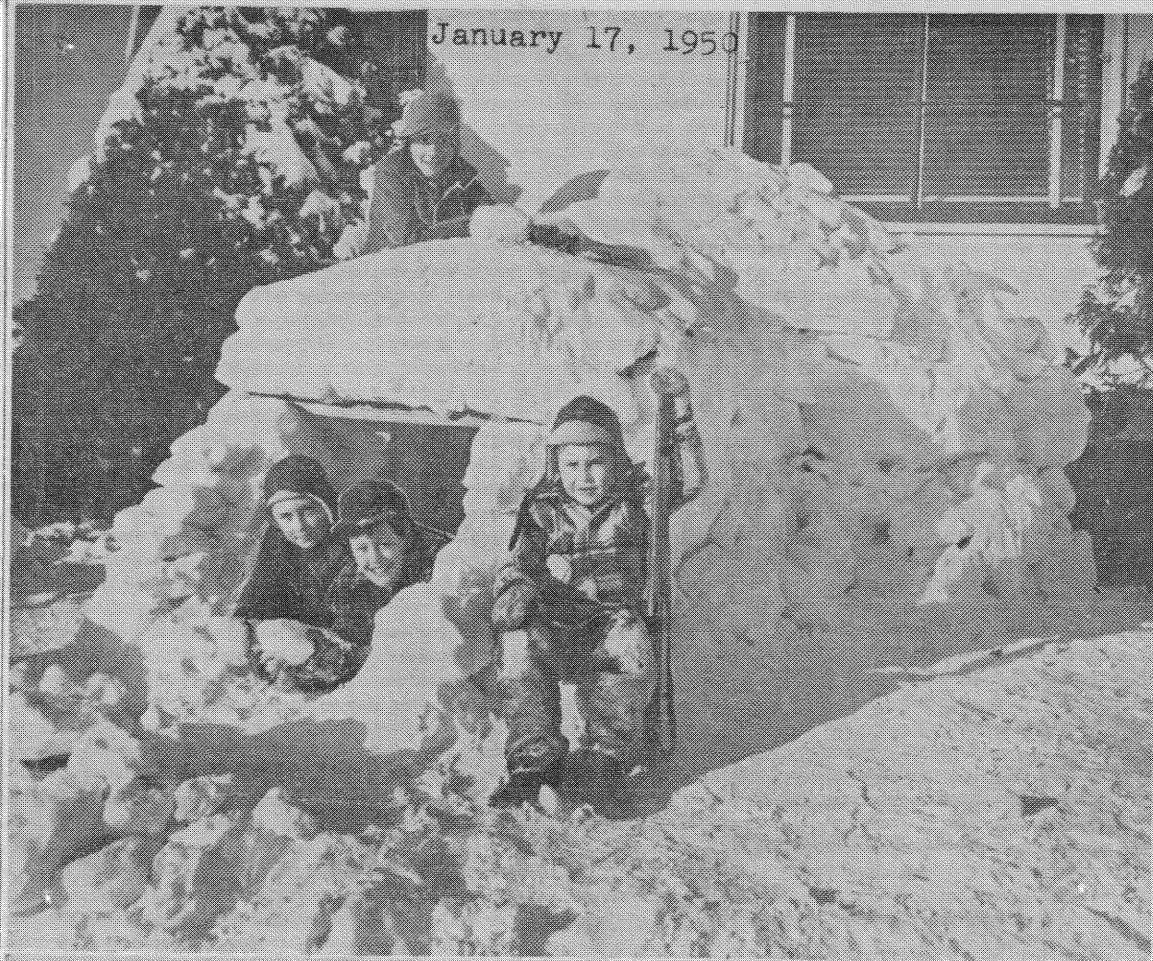


January 17, 1950



SNOW-BOUNDERS—Snow is "great fun" for the kids, top photo, as they give the Eskimos a run for their dough with a well-constructed snow house at 2500 Dean street, built by Rod O'Connor. In the picture are Tim O'Connor, leaning on the roof; Mike O'Connor, lower left, Ford Hyatt and Rickie Muir. On the other hand, snow combined with wind equals blizzard, lower photo, and raises problems with Gordon Thompson, trainman for the Chicago, Milwaukee, St. Paul & Pacific, as big snowdrifts halted two engines Friday at Hampton Junction, near Everson. The engines were removed late Monday through long efforts of railroad crews, and brought to Bellingham—Snow picture by The Herald, train shot by Paul Silver.